

# Concourse Suite 5.0.6

**Installation, Setup, Maintenance and Upgrade**



## **Introduction**

<b>Welcome to Concourse Suite!</b>	<b>4</b>
<b>Legal Notice</b>	<b>4</b>

## **Requirements**

<b>Pick your Software Requirements</b>	<b>5</b>
<b>Pick your Hardware Requirements</b>	<b>6</b>
<b>Workload Estimating</b>	<b>6</b>
<b>Guidelines</b>	<b>7</b>

## **Upgrading from a Previous Version**

<b>Currently Using a Prior version of Concourse suite?</b>	<b>7</b>
<b>PostgreSQL 7.3 / 7.4 no longer supported. No Problem</b>	<b>10</b>

## **Steps to Install Java and Tomcat on Linux OS**

<b>Install Java and Tomcat</b>	<b>10</b>
<b>Additional advanced steps to consider</b>	<b>11</b>

## **Steps to Install Tomcat on Mac OSX**

<b>Install Tomcat (Java is already installed)</b>	<b>11</b>
<b>Additional advanced steps to consider</b>	<b>12</b>

## **Steps to Install Java and Tomcat on Windows**

<b>Install Java and Tomcat</b>	<b>12</b>
<b>Additional advanced steps to consider</b>	<b>12</b>

## **Setting up a Database Server**

<b>Apache Derby on Windows</b>	<b>12</b>
<b>Apache Derby on Linux</b>	<b>15</b>
<b>PostgreSQL on Linux</b>	<b>18</b>
<b>PostgreSQL on Windows</b>	<b>18</b>

IBM DB2 or DB2 Express-C on Windows	22
IBM DB2 or DB2 Express-C on Linux	26
Microsoft SQL Server 2005 or 2005 Express	27
Microsoft SQL Server 2000	30
Microsoft SQL Server DE (MSDE)	32
MySQL 5.0	33
DaffodilDB	34
Oracle 10g Express	36
Firebird	38
Ingres	39
Interbase	42
<b>Configuring Concourse Suite</b>	<b>44</b>
Configure Lookup Lists	50
Configure Custom Folders and Fields	52
Configure Dashboards	53
Configure Roles and Permissions	53
Add Users	55
<b>Advanced Technical Topics</b>	
Database Backup and Restore	56
Setting up a Standby Web Server	56
<b>Questions</b>	<b>57</b>
<b>Known Issues</b>	<b>58</b>
<b>Upgrade Compatibility Matrix for ConcourseSuite 5.0.6</b>	<b>62</b>

## **Introduction**

### **Welcome to Concourse Suite!**

The installation, configuration, maintenance and upgrade of Concourse Suite is intended to be as simple as possible. However, this document assumes that you have a working knowledge of the required applications. Please read the complete instructions for a successful installation and upgrade.

Implementing Concourse Suite, like any enterprise-class software, is often a significant task for an organization. Implementation requires management participation, technical staff, and often the help of experienced Concourse Suite consultants. Organizations implementing Concourse Suite should read and review the Concourse Suite Implementation Guide—contact Concurcive Corporation at <http://www.concurcive.com> to use the services of a Concourse Suite Solution Provider.

This information is provided to those that have read and agreed to the Concourse Suite license agreement.

### **Legal Notice**

Concourse Suite is Copyright © 2000 by Concurcive Corporation, and is distributed under different licenses depending on the version you have acquired. Please consult your license agreement for specifics.

IN NO EVENT SHALL CONCURSIVE CORPORATION BE LIABLE TO ANY PARTY FOR DIRECT, INDIRECT, SPECIAL, INCIDENTAL, OR CONSEQUENTIAL DAMAGES, INCLUDING LOST PROFITS, ARISING OUT OF THE USE OF THIS SOFTWARE AND ITS DOCUMENTATION, EVEN IF CONCURSIVE CORPORATION HAS BEEN ADVISED OF THE POSSIBILITY OF SUCH DAMAGE. CONCURSIVE CORPORATION SPECIFICALLY DISCLAIMS ANY WARRANTIES, INCLUDING, BUT NOT LIMITED TO, THE IMPLIED WARRANTIES OF MERCHANTABILITY AND FITNESS FOR A PARTICULAR PURPOSE. THE SOFTWARE PROVIDED HEREUNDER IS ON AN "AS-IS" BASIS, AND CONCURSIVE CORPORATION HAS NO OBLIGATIONS TO PROVIDE MAINTENANCE, SUPPORT, UPDATES, ENHANCEMENTS, OR MODIFICATIONS.



## Requirements

### Pick your software requirements

Concourse Suite works on a number of platforms. This means that you can choose what works best for your organization. Linux OS, Sun Java, Apache Tomcat, and PostgreSQL are used by the ConcourseSuite development team.

Concourse Suite highly recommends that you run 64-bit Java with a 64-bit operating system and 32-bit Java with a 32-bit operating system.

Operating system			
Linux	Mac OSX	Microsoft Windows	Sun Solaris

JVM
Sun or IBM Java 1.5
Sun or IBM Java 1.6

Database Server
Apache Derby 10.3.1 (Embedded / Included)
Daffodil 1.3 or 1.4_beta*
FireBird SQL 1.5, 2.1*
IBM DB2 Express 9.0, 9.5**
Ingres**
Interbase**
Microsoft SQL Server 2005, 2005 Express, 2000, 2000 DE
MySQL 5.0**
Oracle 10G Express**
PostgreSQL 8.0, 8.1, 8.2

Application Server + Sun Java VM
Apache Tomcat 5.5 + Sun Java 5.0 JRE
Apache Geronimo 1.1 + Sun Java 1.5
IBM Websphere CE + Bundled IBM Java
IBM Websphere 6.1.0.5 + Bundled IBM Java (Some Issues still)

Support for these databases has been dropped in the Concourse Suite Enterprise Edition 5.0.5 and later.

\*\* Installation for and upgrades to Concourse Suite 5.0.6 is not yet complete for these databases.

## **Pick your hardware requirements**

Concourse Suite is lightweight. Any server you can buy today is generally more than you'll need. However, configure it based on the needs of your organization. If 100% uptime is required, a second spare server is recommended. If your organization plans to save lots of documents, increase the drive space. A single server can be used for the web server, database server, and mail server and expanded to additional servers later, when necessary. Dual processors or a dual-core processor is recommended because Concourse Suite takes advantage of Java's multi-threaded operations.

## **Workload Estimating**

### **Base memory required is 256MB**

- Each additional user requires 1MB of memory
- Other factors will increase memory requirements

### **Base CPU required is 2 cores**

Additional computing power may be required for:

- Increase in concurrent users
- Generating a high quantity of reports or very large reports
- Batch email processing
- Background workflows

### **Base storage required is 1GB**

Additional storage space may be required for:

- Storing large or many documents
- Increase in number of records

## **Guidelines**

1-25 Users	26-100	101-250	250 +
733 MHz (x2)	1.2 GHz (x2)	1.2 GHz (x2)	2.4 GHz (x2)
512 MB	1 GB	1 GB	2 GB
18 GB	36 GB	36 GB	72 GB
RAID	RAID	RAID	RAID

## Upgrading from a Previous Version

### Currently using a prior version of Concourse Suite?

Upgrading from a previous version of Concourse Suite, or Centric CRM, has been designed to be as simple as possible. All of your previous configuration information is saved in the file library, which, by default, is not in the same path as the web application, so your information will be preserved.

Please review all upgrade steps to ensure that the upgrade goes as planned. You will most likely want to avoid down-time for your users. The upgrade process can be completed in less than 10 minutes if you are prepared and everything goes well.

**Important:** Make sure to backup the database and file library before continuing with the upgrade. The upgrade process will make irreversible changes to your database, which you can only get back by restoring a backup.

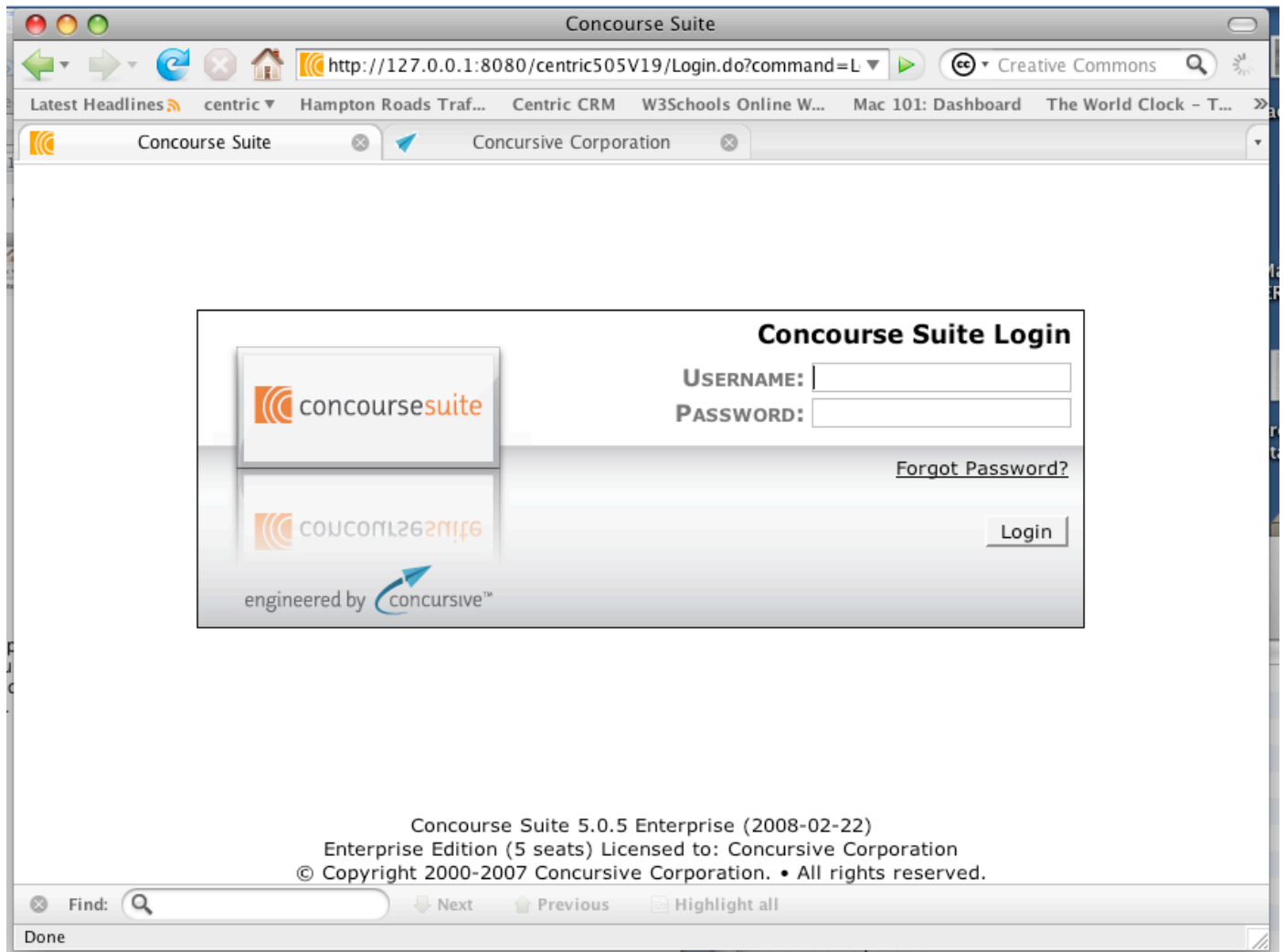
1. Backup the centric\_crm database so you will be able restore this database if a problem occurs during upgrade.
2. Backup the file library, specified during application installation.
3. Shutdown the Apache Tomcat web application server.
4. Backup the existing Apache Tomcat webapps/centric.war file so you can restore this WAR if a problem occurs during upgrade.
5. Delete the existing Apache Tomcat webapps/centric directory.
6. Delete the existing Apache Tomcat work/ directory.
7. Copy the centric.war file into Tomcat's webapps folder, overwriting the existing centric.war file. Replacing the existing file is important for preserving your existing settings during an upgrade.
8. Startup the Apache Tomcat web application server.
9. Login to ConcourseSuite to perform additional upgrade steps.

**NOTE:** Upgrades to Concourse Suite 5.0.6 are only recommended for installations version at 5.0.3 and above. If you have previously installed 5.0.1 or

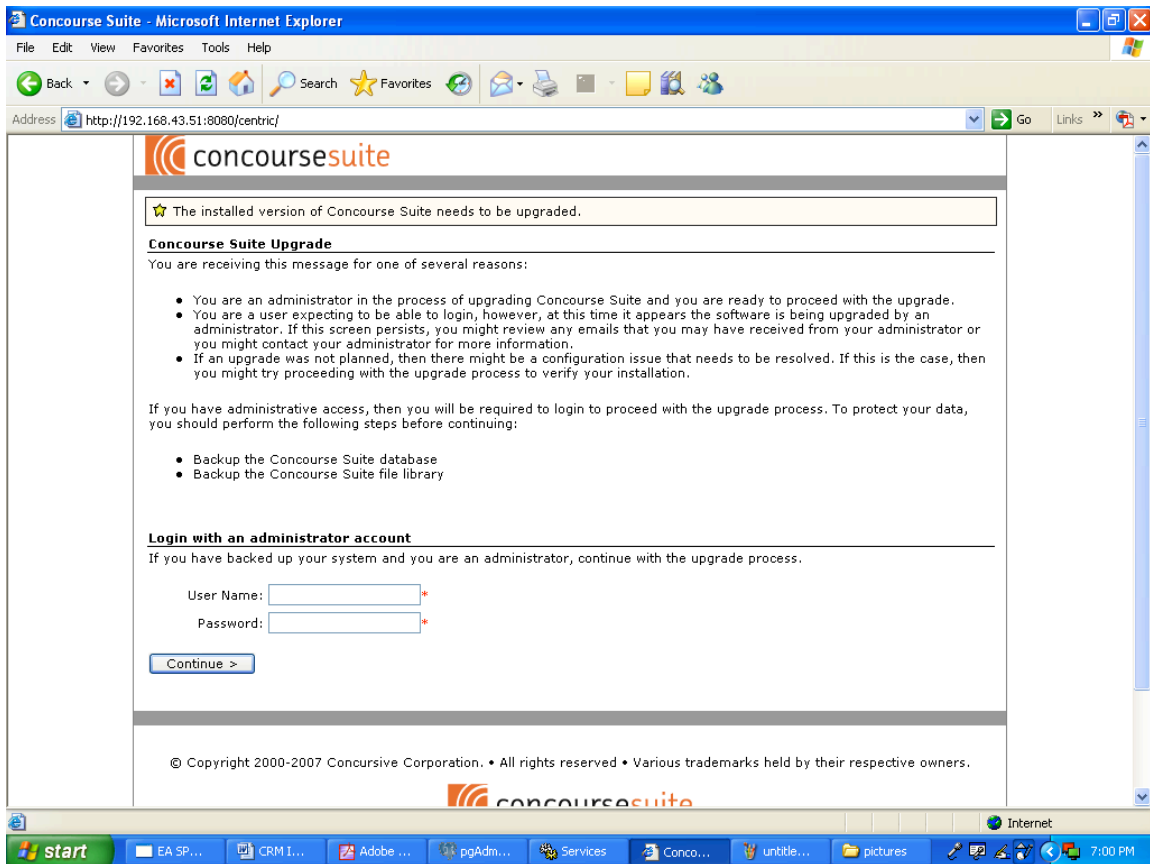
**5.0.2 and want to upgrade then please contact us for additional support and instructions.**

**NOTE: During the Upgrade process you may encounter the following warning – this is normal and no cause for alarm:**

**"An error occurred while trying to create the database schema, the following error was provided: Invalid object name 'lookup\_authentication\_classes'." If the upgrade process indicates it has completed successfully then all is well.**



Once the application has started, and you are able to connect with a web browser, you will be prompted with a page indicating that the application has detected an out-of-date database. Follow the on-screen instructions to finalize the upgrade.



If you are not presented with an upgrade screen, it's possible that your browser has cached the login screen. Try refreshing or restarting your browser or emptying its cache.



Until an administrator logs in and confirms the upgrade, users will not be able to login.



**Make sure you have a backup!** If any problems occur during the upgrade, a detailed report is generated in the Apache Tomcat log file which can be used to further identify the problem.

## **PostgreSQL 7.3/7.4 no longer supported. No problem.**

We do our best to work with older versions of software, but we've moved on from PostgreSQL 7.3 and 7.4; PostgreSQL 8.0 and up add some important database maintenance capabilities that are required for upgrading table structures.

Before following these steps, make sure your outdated installation of PostgreSQL is not required for other applications in your organization. These steps are based on a Linux install since Windows users started at PostgreSQL 8.0 which already includes the required features.

1. Backup your current databases. You can use Postgres command:  
"pg\_dumpall > db\_backup.sql"
2. Download and install PostgreSQL 8.2 from <http://www.postgresql.org>.
3. Start PostgreSQL, you should get a warning that your existing database is still in place. Move it and then restart PostgreSQL again to initialize an empty database.
4. Login as the "postgres" user and restore your database using "psql template1 -f db\_backup.sql"
5. Make sure TCP/IP connections are enabled for localhost in pg\_hba.conf and that the web server IP has access to PostgreSQL, then restart postgresql
6. Continue with the ConcourseSuite upgrade.

## **Steps to Install Java and Tomcat on Linux OS**

### **Install Java and Tomcat**

You should use the files from the download site specified below. Do not use Java and Tomcat that come pre-bundled with CentOS and other Linux distributions.

1. Download and install the Java JRE or JDK 5.0 from <http://www.java.com>. gcc-java (GNU compiler) does not work and is bundled with some Linux distributions so this must be renamed or removed.
2. Download and install Tomcat 5.5 stable "Core" from <http://tomcat.apache.org/download-55.cgi>. Apache Tomcat is bundled with some Linux distributions and fails if it was compiled with gcc-java.
3. Depending on the total memory of your system, typically set Tomcat's memory to half of the server by setting the following environment variable (directly in the startup.sh file):

Sun Java:

```
export JAVA_OPTS="-Xms512m -Xmx512m -XX:PermSize=64m -XX:MaxPermSize=128m"
```

IBM Java:

```
export JAVA_OPTS="-Xms512m -Xmx512m"
```

4. Enable headless graphics rendering to enable graphs by setting the following environment variable (directly in the startup.sh file):

```
export CATALINA_OPTS=-Djava.awt.headless=true
```

5. Download and copy the ConcourseSuite application (centric.war) from <http://www.concursive.com> into Tomcat's "webapps" directory
6. Setup a service to automatically have Tomcat start and stop during startup and shutdown in accordance with Tomcat's documentation. The user that starts Tomcat must have a home directory as this is where Java stores preferences.

#### **Additional advanced steps to consider**

1. Change Tomcat port to 80 in server.xml (either integrate with Apache Web Server or turn off Apache Web server if Tomcat will be using port 80)
2. Obtain and install an SSL certificate to run on port 443

### **Steps for a successful Mac OS X Installation**

#### **Install Tomcat (Java is already installed)**

1. Download and install Tomcat 5.5 stable "Core" from <http://tomcat.apache.org/download-55.cgi>
2. Depending on the total memory of your system, typically set Tomcat's memory to half of the server by setting the following environment variable (in startup.sh):

```
export JAVA_OPTS="-Xms512m -Xmx512m"
```

3. Download and copy the ConcourseSuite binary (centric.war) file from <http://www.concursive.com> into Tomcat's "webapps" directory
4. Setup a service to automatically have Tomcat start and stop during startup and shutdown

#### **Additional advanced steps to consider**

1. Change Tomcat port to 80 in server.xml (either integrates with Apache Web Server or turn off Apache Web server if Tomcat will be using port 80)
2. Obtain and install an SSL certificate to run on port 443

## Steps for a successful Windows Installation

### Install Java and Tomcat

1. Download and install the Java JRE 5.0 or later from <http://www.java.com>
2. Download and install Tomcat 5.5 stable “Core” - Windows Executable from <http://tomcat.apache.org/download-55.cgi>; depending on the total memory of your system, typically set Tomcat’s memory to half of the server using Tomcat’s configuration editor
3. Open the Windows Services Control Panel and stop the “Apache Tomcat” service
4. Download and copy the ConcourseSuite binary (centric.war) file from <http://www.concursive.com> into Tomcat’s “webapps” directory—usually located in C:\Program Files\Apache Software\Tomcat\webapps

### Additional advanced steps to consider

1. Change Tomcat port to 80 in server.xml (either integrate with Windows IIS WWW Server or turn off Windows IIS WWW Server in the Windows Services Control Panel if Tomcat will be using port 80).
2. Obtain and install an SSL certificate to run on port 443

## Setting up a Database Server

### Apache Derby on any platform

#### Installation Steps for Derby on Windows:

##### 1. Download Derby

Download the binary Apache Derby distribution from the Derby web site at [http://db.apache.org/derby/derby\\_downloads.html](http://db.apache.org/derby/derby_downloads.html). These tutorial instructions use version 10.1.2.1 and assume you downloaded one of the binary distribution files listed in the table below:



Operating System	Download File
Windows	db-derby-10.1.2.1-bin.zip
UNIX, Linux, and Mac	db-derby-10.1.2.1-bin.tar.gz

If a more recent release is available, download that, then substitute that version number for 10.1.2.1 in the following instructions.

## 2. Install Derby

Choose the directory into which you want to install the Derby software. You must have write permissions to this directory. The sample instructions below use C:\Apache for Windows and /opt/Apache for UNIX; be sure to use your actual location. Copy the software distribution to the chosen location and then extract it as shown below:

Windows (use your extraction tool—these instructions show mks unzip):

```
mkdir C:\Apache
copy db-derby-10.1.2.1-bin.zip C:\Apache
cd C:\Apache
unzip db-derby-10.1.2.1-bin.zip
```

## 3. Set DERBY\_INSTALL

Set the DERBY\_INSTALL variable to the location where you installed Derby. Examples are shown below, but be sure to use the actual location on your system:

Windows:

```
C:\> set DERBY_INSTALL=C:\Apache\db-derby-10.1.2.1-bin
```

## 4. Configure Embedded Derby

To use Derby in its embedded mode set your CLASSPATH to include the jar files listed below:

- **derby.jar**: contains the Derby engine and the Derby Embedded JDBC driver
- **derbytools.jar**: optional, provides the ij tool that is used by a couple sections in this tutorial

You can set your CLASSPATH explicitly with the command shown below:

Windows:

```
C:\> set CLASSPATH=%DERBY_INSTALL%\lib\derby.jar;%DERBY_INSTALL%\lib\derbytools.jar;.
```

4. Change your local directory to:  
DERBY\_INSTALL/frameworks/embedded/bin

The setEmbeddedCP.bat (Windows) and setEmbeddedCP.ksh (UNIX) scripts use the DERBY\_INSTALL variable to set the CLASSPATH for Derby embedded usage. You can edit the script itself to set DERBY\_INSTALL, or you can let the script get DERBY\_INSTALL from your environment. Since you already set DERBY\_INSTALL in the “[Set DERBY\\_INSTALL](#)” section above, you don’t need to edit the script, so go ahead and execute it as shown below:

Windows:

```
C:\> cd %DERBY_INSTALL%\frameworks\embedded\bin
```

```
C:\Apache\db-derby-10.1.2.1-bin\frameworks\embedded\bin> setEmbeddedCP.bat
```

## 6. Verify Derby

Run the sysinfo command, as shown below, to output Derby system information:

```
java org.apache.derby.tools.sysinfo
```

Successful output will look something like this:

```
----- Java Information -----  
  
Java Version: 1.4.2_06  
  
Java Vendor: Sun Microsystems Inc.  
  
Java home: /opt/jdk1.4  
  
Java classpath: /opt/Apache/db-derby-10.1.2.1-  
bin/lib/derby.jar:/opt/Apache/db-derby-10.1.2.1-bin/lib/derbytools.jar:  
  
OS name: Linux
```

```

OS architecture: i386

OS version:      2.6.10-1.760_FC3

Java user name:  jta

Java user home:  /home/jta

Java user dir:   /opt/Apache/db-derby-10.1.2.1-
bin/frameworks/embedded/bin

java.specification.name: Java Platform API Specification

java.specification.version: 1.4

----- Derby Information -----

JRE - JDBC: J2SE 1.4.2 - JDBC 3.0

[/opt/Apache/db-derby-10.1.2.1-bin/lib/derby.jar] 10.1.2.1 - (330608)

[/opt/Apache/db-derby-10.1.2.1-bin/lib/derbytools.jar] 10.1.2.1 - (330608)

----- Locale Information -----

```

## Installation Steps for Derby on Linux:

### 1. Download Derby

Download the binary Apache Derby distribution from the Derby web site at [http://db.apache.org/derby/derby\\_downloads.html](http://db.apache.org/derby/derby_downloads.html). These tutorial instructions use version 10.1.2.1 and assume you downloaded one of the binary distribution files listed in the table below:

Operating System	Download File
Windows	db-derby-10.1.2.1-bin.zip
UNIX, Linux, and Mac	db-derby-10.1.2.1-bin.tar.gz

If a more recent release is available, download that, then substitute that version number for 10.1.2.1 in the following instructions.

### 2. Install Derby

Choose the directory into which you want to install the Derby software. You must have write permissions to this directory. The sample instructions below use

C:\Apache for Windows and /opt/Apache for UNIX; be sure to use your actual location. Copy the software distribution to the location you choose, then extract it as shown below.

UNIX:

```
mkdir /opt/Apache  
  
cp db-derby-10.1.2.1-bin.tar.gz /opt/Apache  
  
cd /opt/Apache  
  
tar xzvf db-derby-10.1.2.1-bin.tar.gz
```

### 3. Set DERBY\_INSTALL

Set the DERBY\_INSTALL variable to the location where you installed Derby. Examples are shown below, but be sure to use the actual location on your system:

UNIX Korn Shell:

```
$ export DERBY_INSTALL=/opt/Apache/db-derby-10.1.2.1-bin
```

### 4. Configure Embedded Derby

To use Derby in its embedded mode set your CLASSPATH to include the jar files listed below:

- **derby.jar**: contains the Derby engine and the Derby Embedded JDBC driver
- **derbytools.jar**: optional, provides the ij tool that is used by a couple sections in this tutorial

You can set your CLASSPATH explicitly with the command shown below:

UNIX:

```
$ export CLASSPATH=$DERBY_INSTALL/lib/derby.jar:$DERBY_INSTALL/lib/derbytools.jar:
```

5. Change your current directory to:  
DERBY\_INSTALL/frameworks/embedded/bin

The setEmbeddedCP.bat (Windows) and setEmbeddedCP.ksh (UNIX) scripts use the DERBY\_INSTALL variable to set the CLASSPATH for Derby embedded usage. You can edit the script itself to set DERBY\_INSTALL, or you can let the script get DERBY\_INSTALL from

your environment. Since you already set DERBY\_INSTALL in the “[Set DERBY\\_INSTALL](#)” section above, you don’t need to edit the script, so go ahead and execute it as shown below:

UNIX:

```
$ cd $DERBY_INSTALL/frameworks/embedded/bin  
$ . setEmbeddedCP.ksh
```

## 6. Verify Derby

Run the sysinfo command, as shown below, to output Derby system information:

```
java org.apache.derby.tools.sysinfo
```

Successful output will look something like this:

```
----- Java Information -----  
  
Java Version: 1.4.2_06  
  
Java Vendor: Sun Microsystems Inc.  
  
Java home: /opt/jdk1.4  
  
Java classpath: /opt/Apache/db-derby-10.1.2.1-  
bin/lib/derby.jar:/opt/Apache/db-derby-10.1.2.1-bin/lib/derbytools.jar:  
  
OS name: Linux  
  
OS architecture: i386  
  
OS version: 2.6.10-1.760_FC3  
  
Java user name: jta  
  
Java user home: /home/jta  
  
Java user dir: /opt/Apache/db-derby-10.1.2.1-  
bin/frameworks/embedded/bin  
  
java.specification.name: Java Platform API Specification  
  
java.specification.version: 1.4
```

```
----- Derby Information -----  
  
JRE - JDBC: J2SE 1.4.2 - JDBC 3.0  
  
[/opt/Apache/db-derby-10.1.2.1-bin/lib/derby.jar] 10.1.2.1 - (330608)  
  
[/opt/Apache/db-derby-10.1.2.1-bin/lib/derbytools.jar] 10.1.2.1 - (330608)  
  
----- Locale Information -----
```

## PostgreSQL on Linux

If you are using PostgreSQL on Linux, then perform the following additional steps on a Linux server:

1. Verify if PostgreSQL is installed with “psql—version”.
2. If your installation does not already have PostgreSQL 8.2, 8.1, or 8.0, then download and install PostgreSQL 8.2 from <http://www.postgresql.org>
3. Make sure TCP/IP connections are enabled for localhost in pg\_hba.conf, the default since 8.0
4. For added security you can create a “centric\_crm” user using the following command, or optionally use the default “postgres” user without a password:

**createuser—pwprompt centric\_crm**

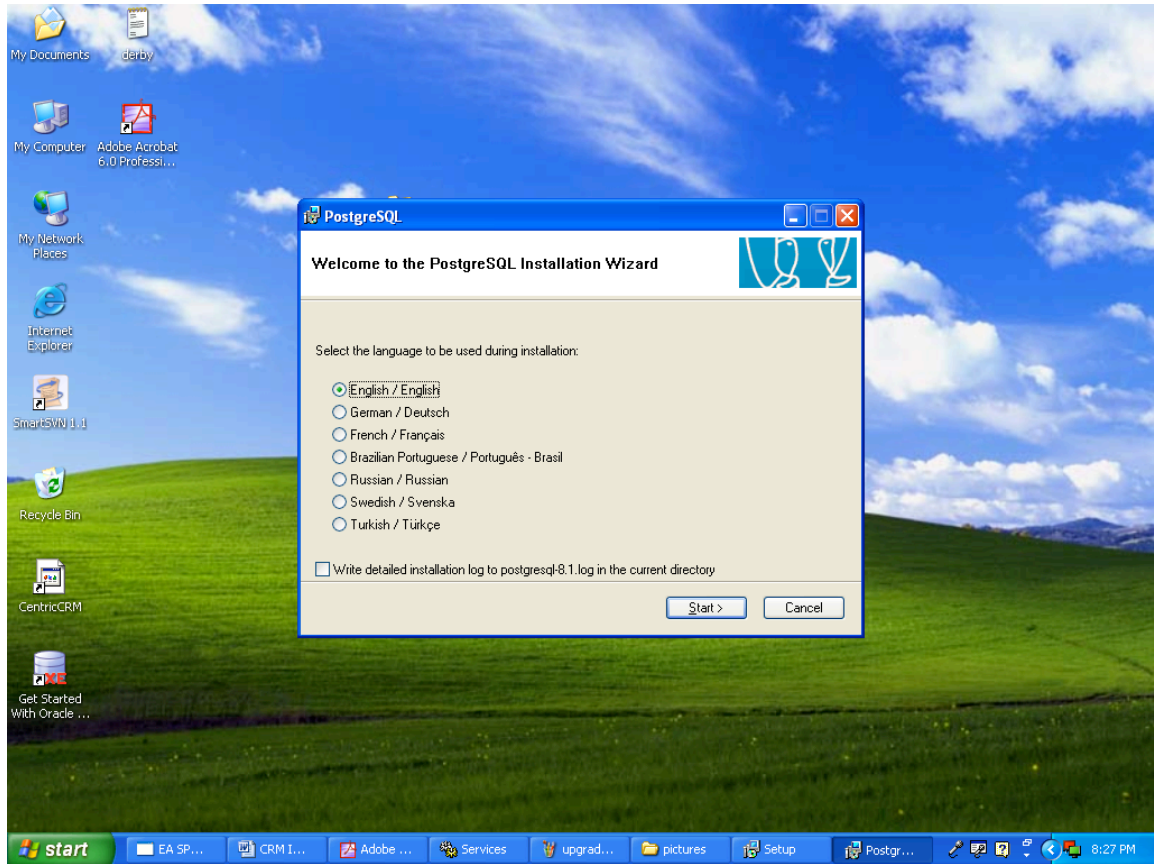
5. Create a “centric\_crm” database, as that user, using the following command:

**createdb -E UNICODE centric\_crm**

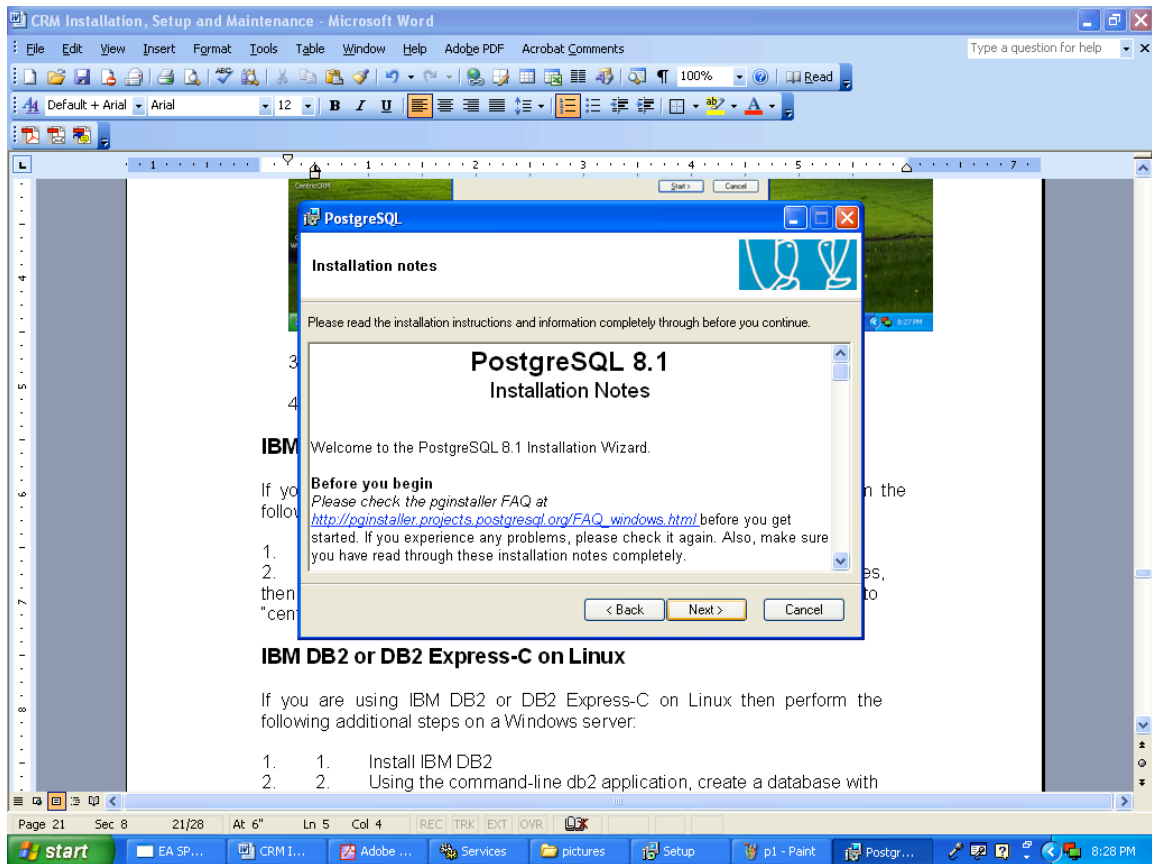
## PostgreSQL on Windows

### Installation Steps:

1. Download Postgres database from the site [www.postgresql.org](http://www.postgresql.org)
2. Click on the Postgres executable. Click on Start as shown below:

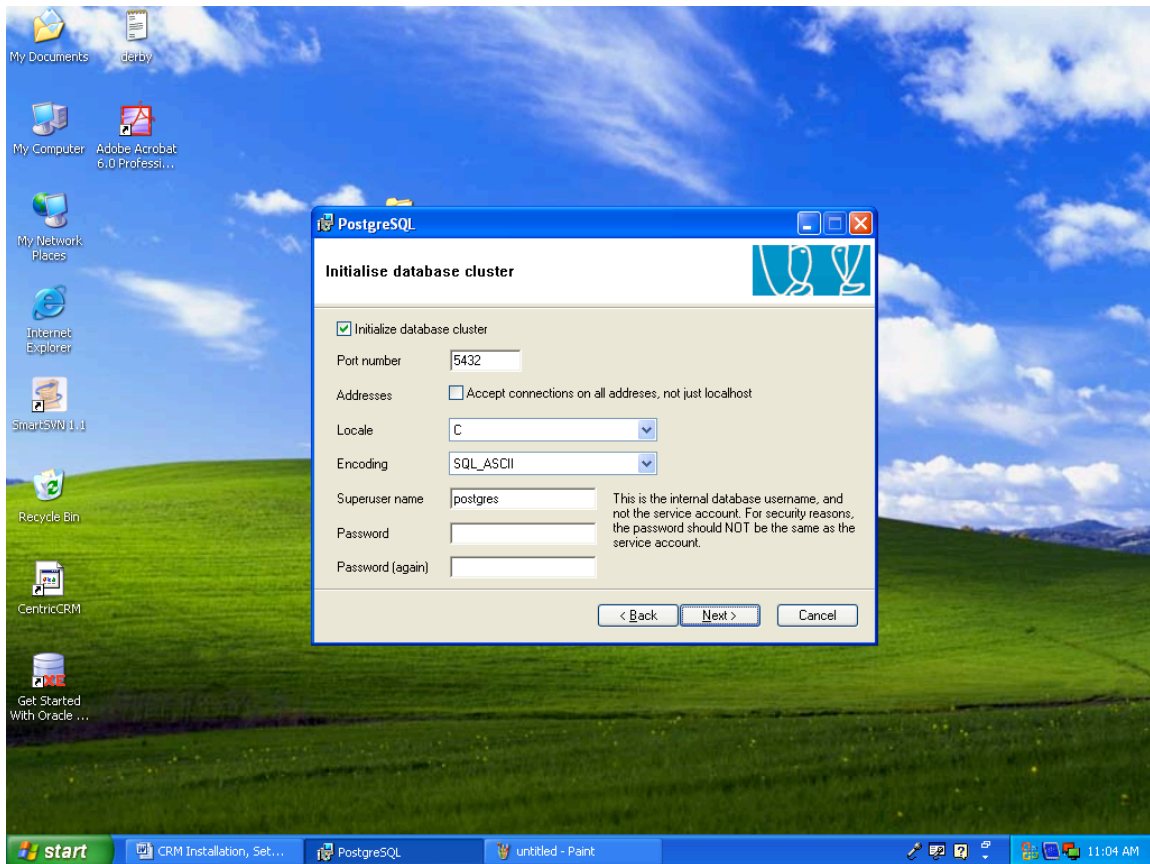


3. Click on Next.
4. Click on Next.

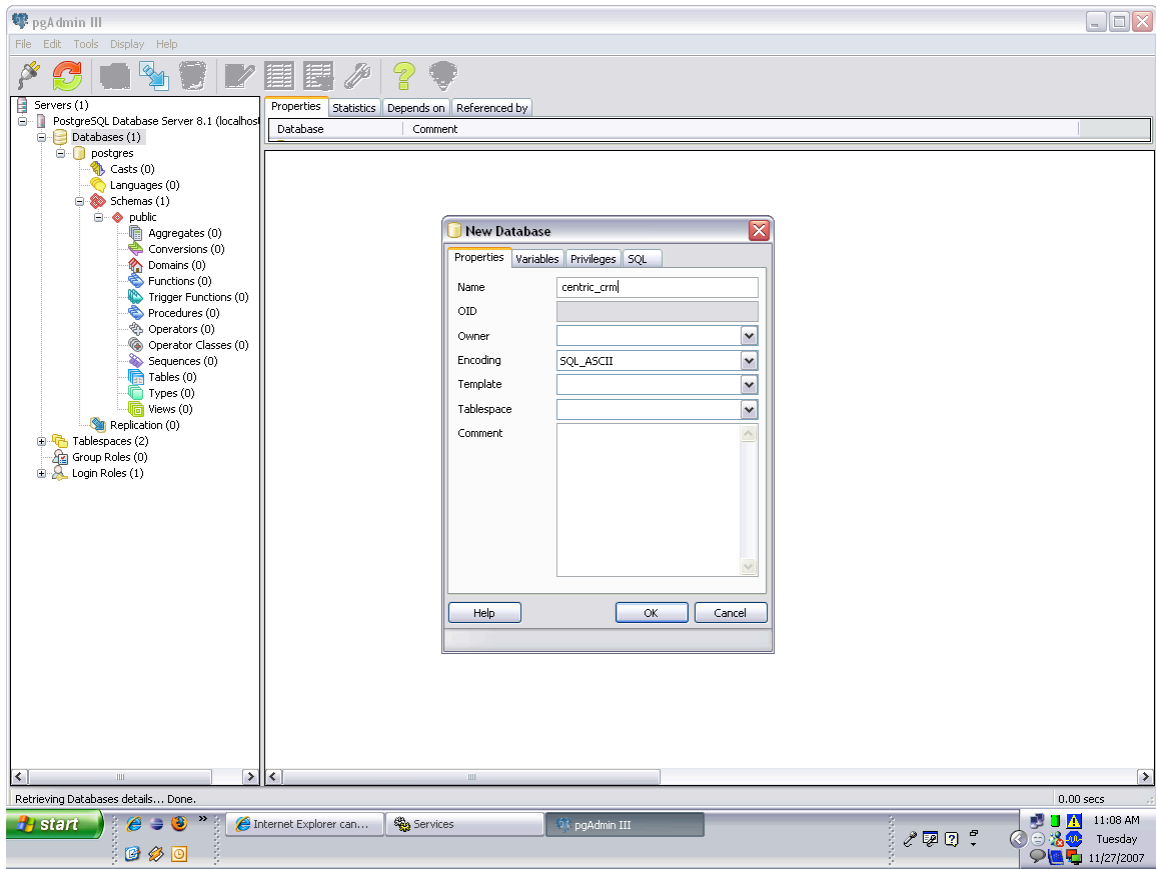


5. Click on Next.
6. Enter account password twice as shown below. The default is usually "Postgres".
7. Click on yes. Click on yes. Click on "OK".
8. Enter the Password twice as shown below:





9. Click on Next.
10. Click on Next. Click on Next.
11. Postgres will be installed successfully.
12. Using PGAdmin tool, which comes with Postgres, create an empty database “centric\_crm” as shown below:



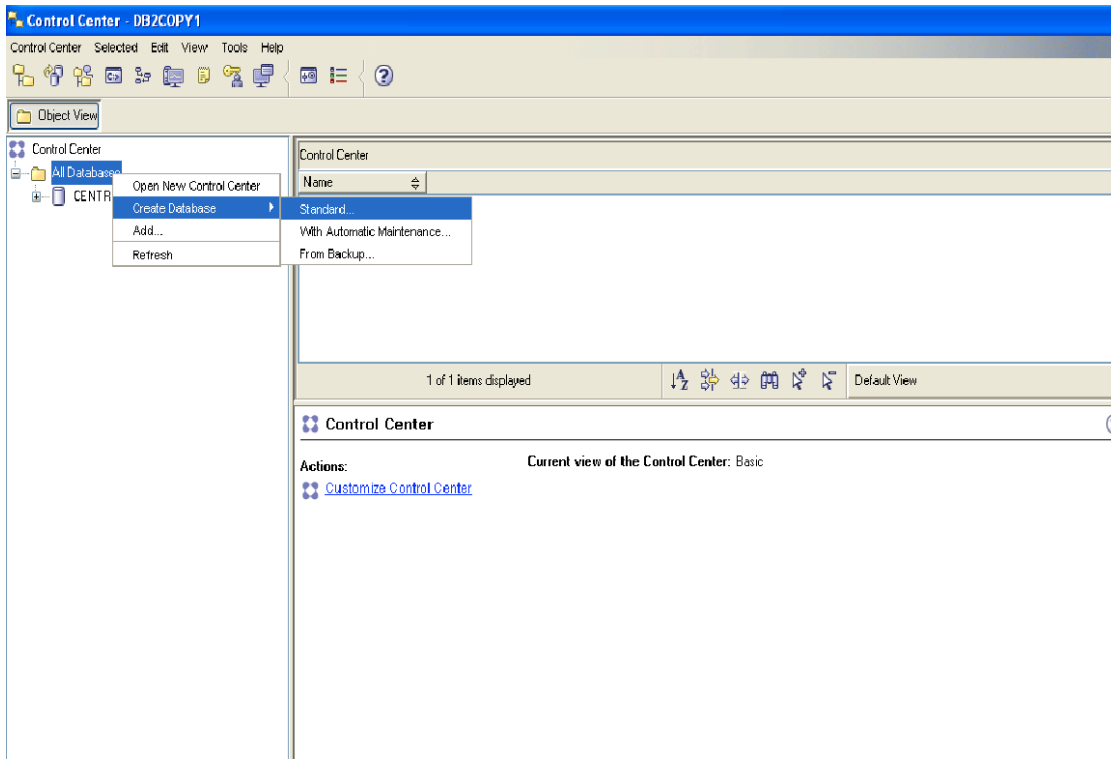
## IBM DB2 or DB2 Express-C on Windows

### Installation Steps:

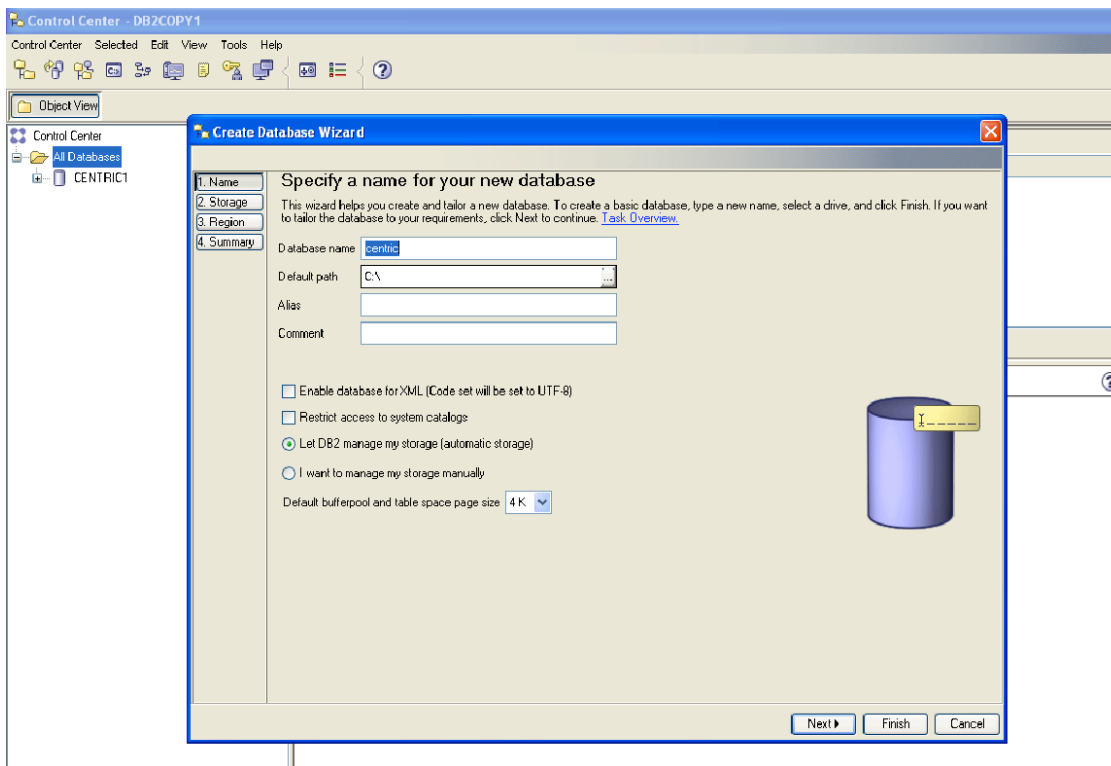
NOTE: Upgrading a system using a DB2 database to ConcourseSuite 5.0 or above should have a minimum of two megabytes of physical ram installed. If not, there is a high probability that the upgrade will fail.

1. Install IBM DB2
2. Using the DB2 Control Center application, choose All Databases, then Create Database with Automatic Maintenance; set the database name to "centric", choose UTF-8 as the code set, and 32k for pagesize.
3. Follow the screen shots to create database.

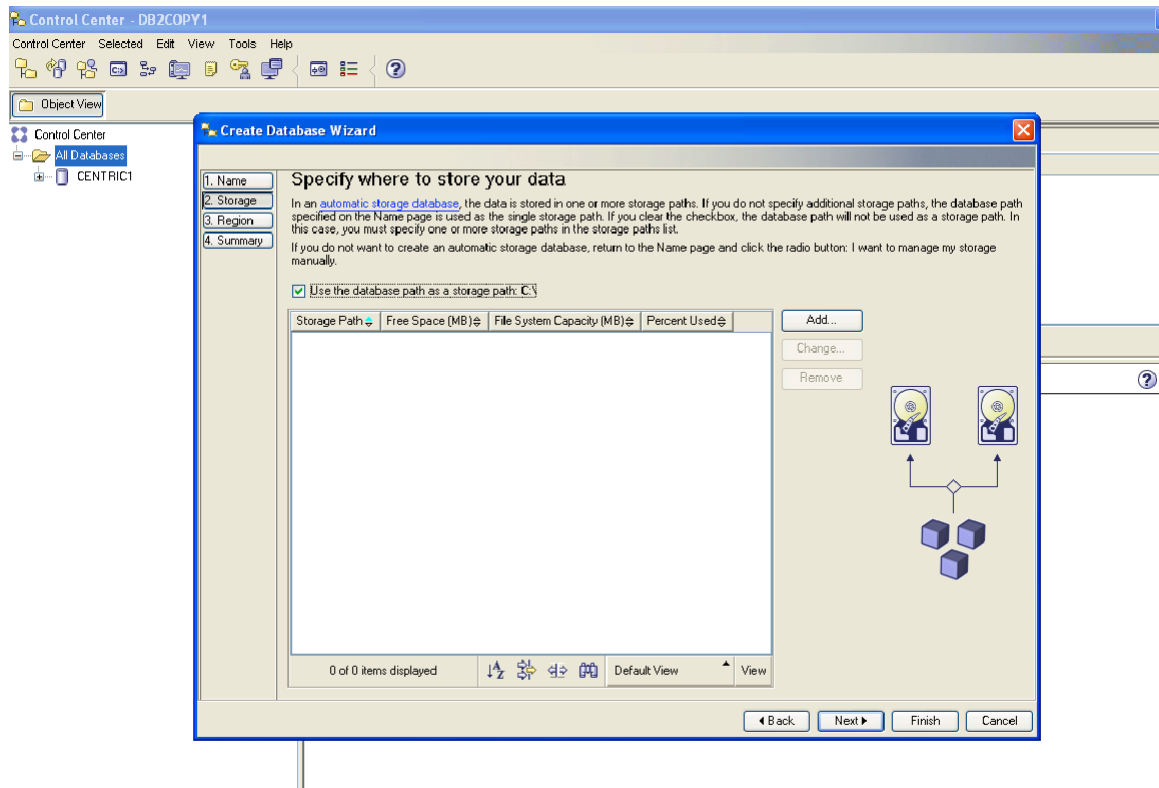
## Screen 1:



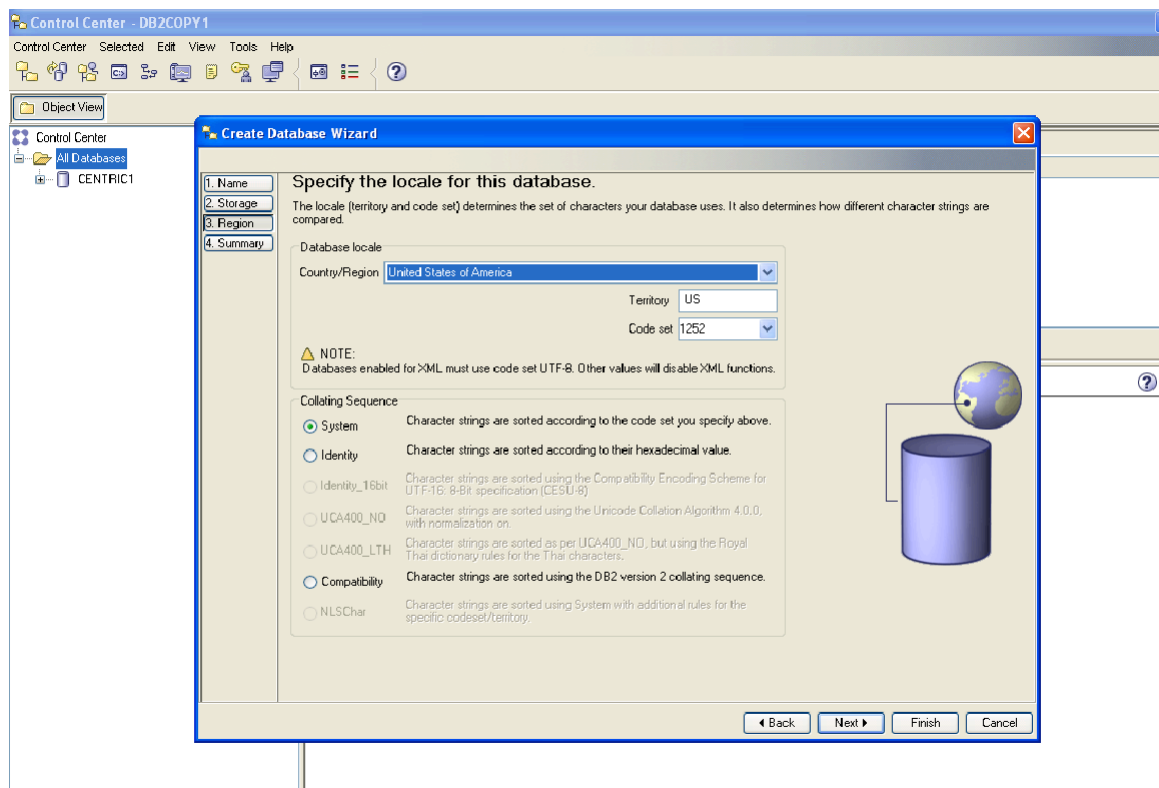
## Screen 2:



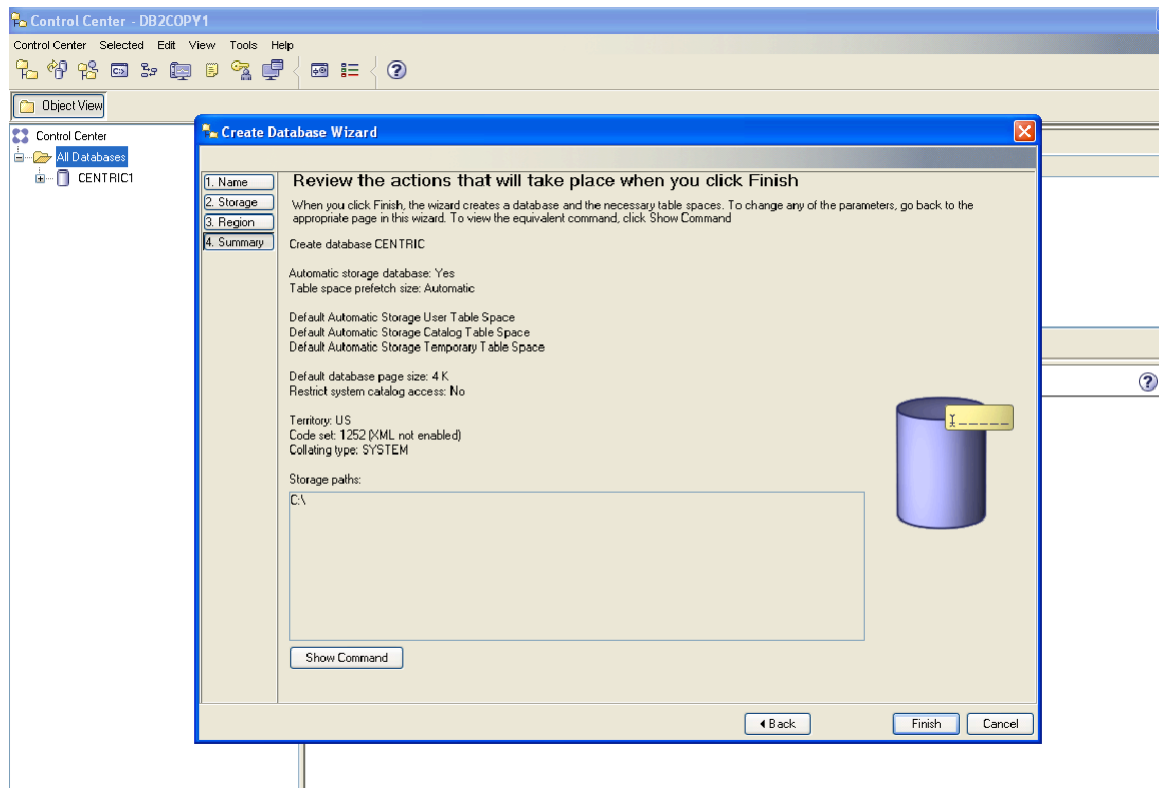
### Screen 3:



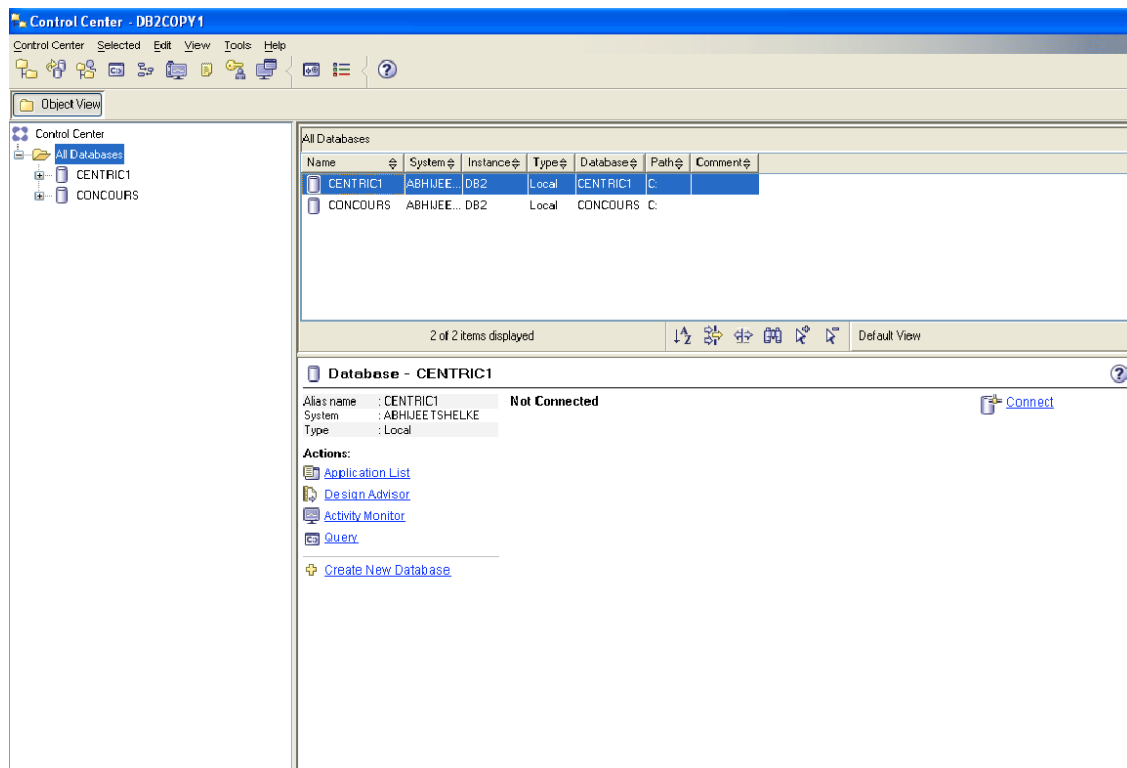
### Screen 4:



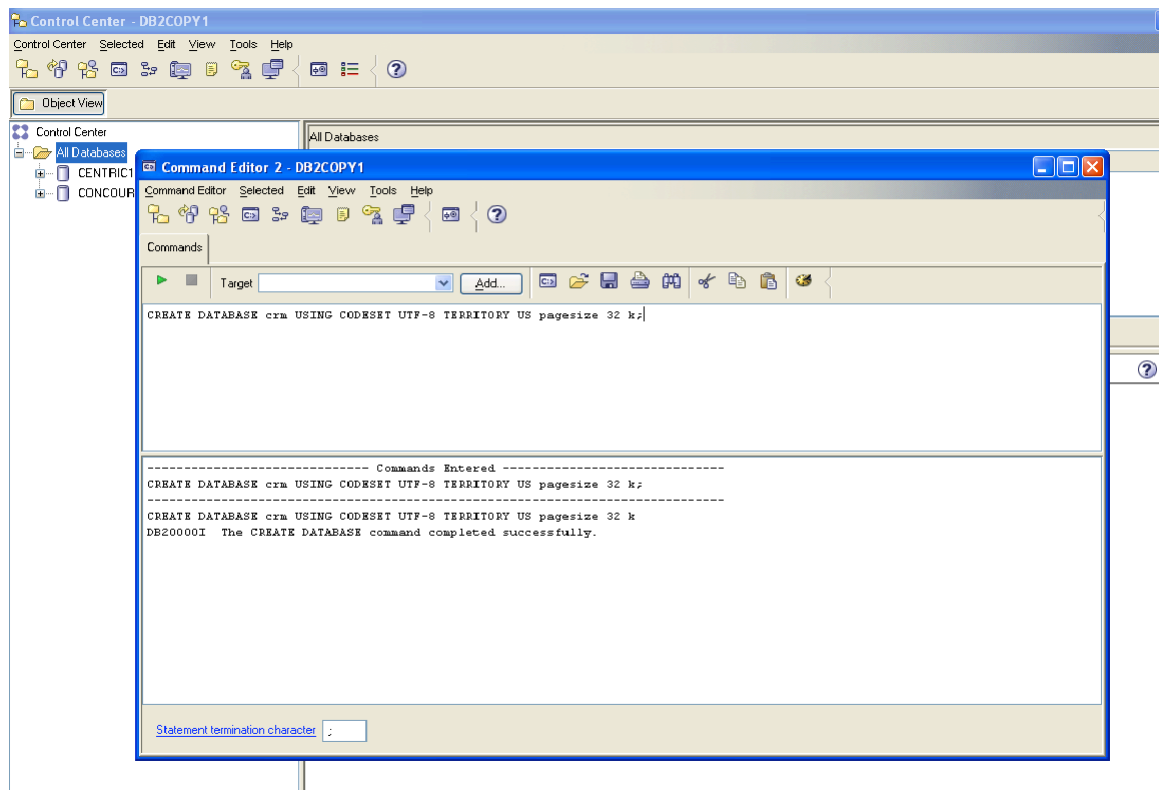
## Screen 5:



## Screen 6:



## DB2 database creation using Query:



## IBM DB2 or DB2 Express-C on Linux

### Installation steps:

NOTE: Upgrading a system using a DB2 database to ConcourseSuite 5.0 should have a minimum of two megabytes of physical ram installed. If not, there is a high probability that the upgrade will fail.

1. Install IBM DB2
2. Using the command-line db2 application, create a database with the following SQL command:

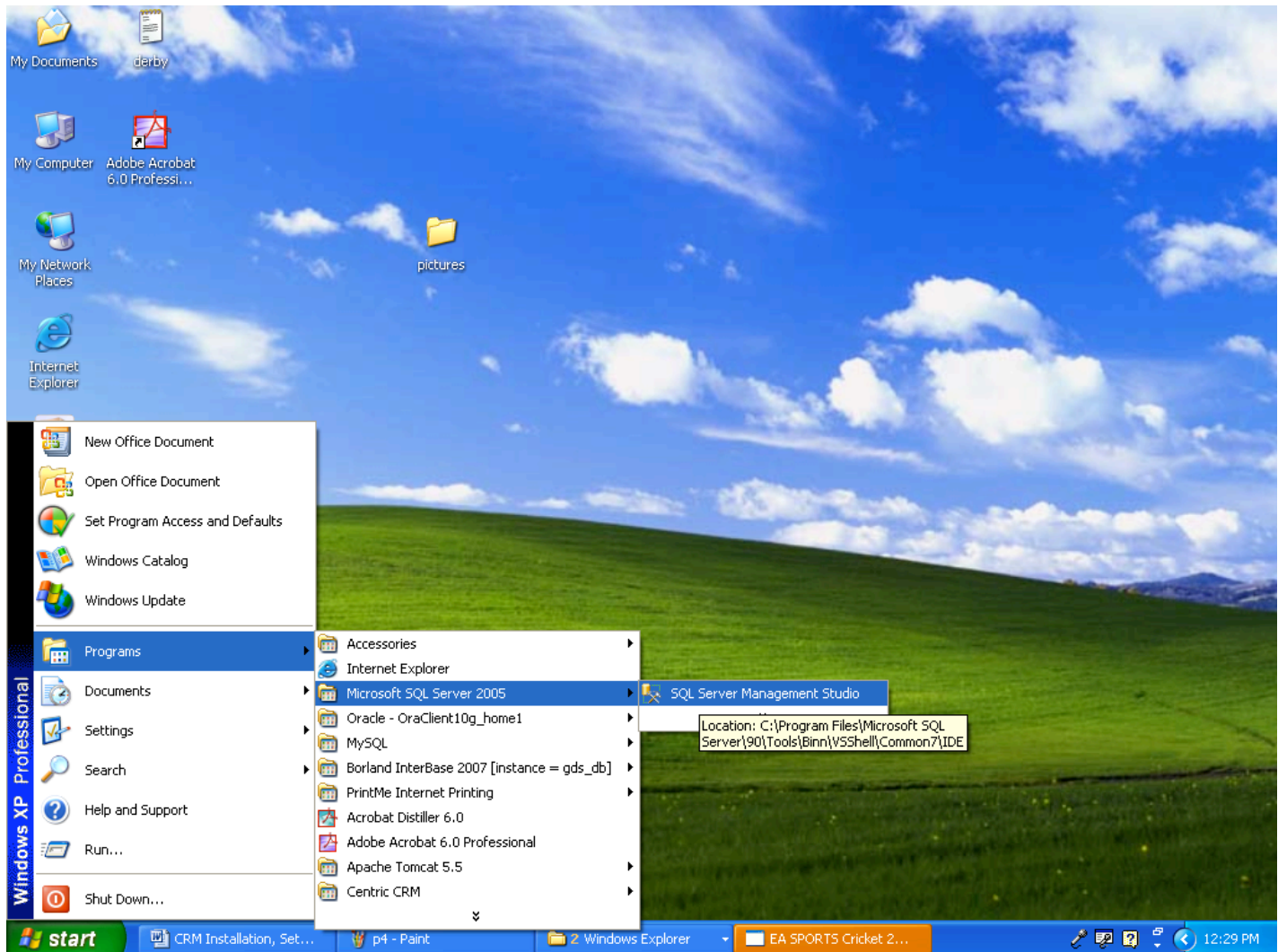
```
CREATE DATABASE centric USING CODESET UTF-8 TERRITORY US pagesize 32 k
```

3. Verify the port that DB2 is using by looking at the DB2 logs; the port is typically 50000 but the install process may choose 50001 or another port automatically

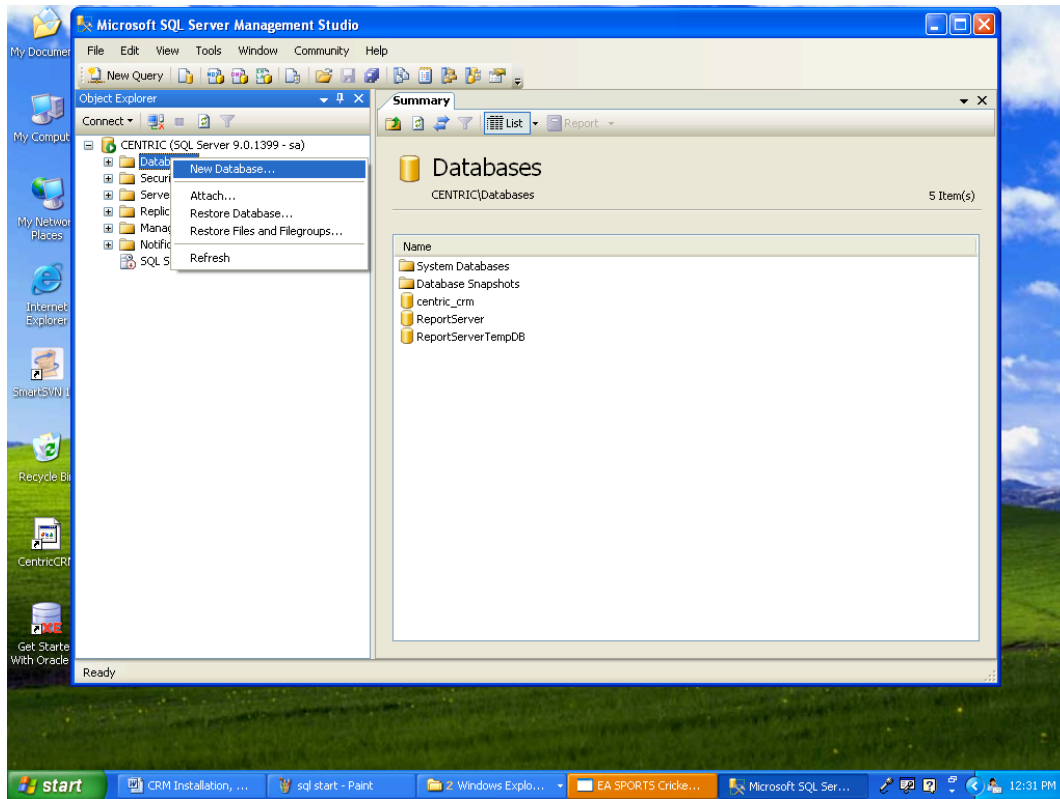
## Microsoft SQL Server 2005 or 2005 Express

### Installation steps:

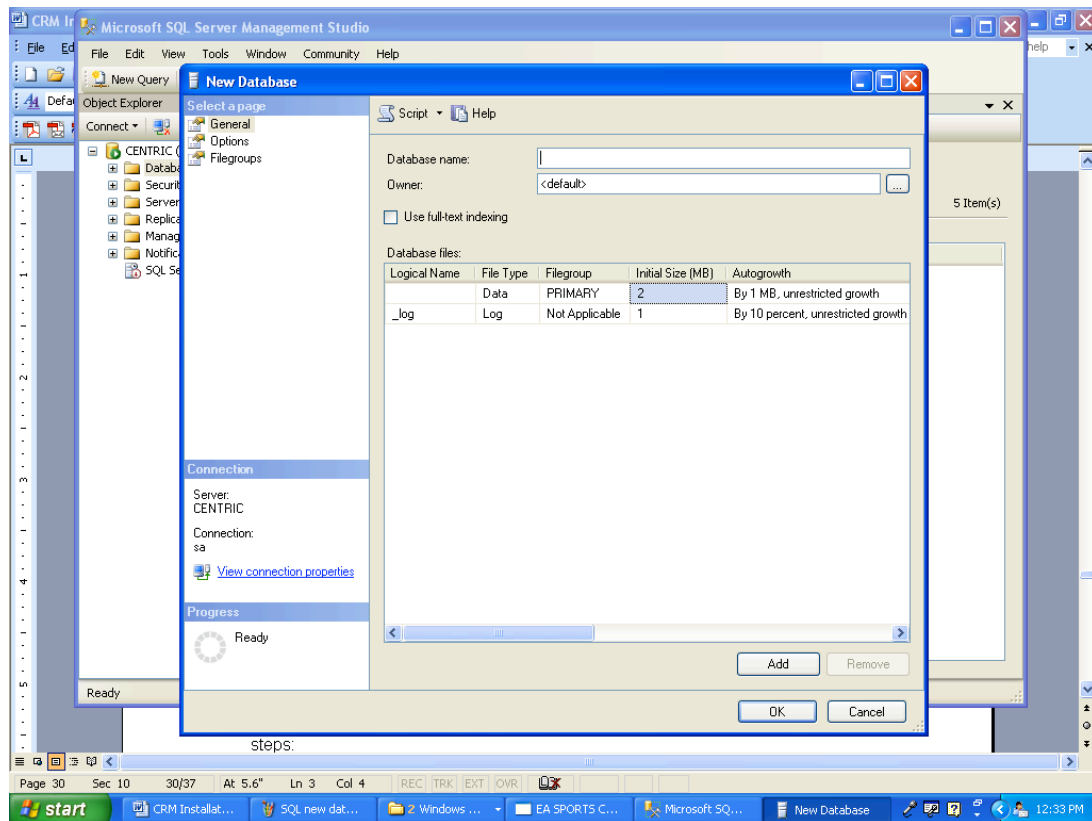
1. Install Microsoft SQL server 2005
2. From start -> Programs -> Microsoft SQL server 2005 -> click SQL server management studio



3. Select SQL authentication
4. Enter username and Password and click on connect
5. Right click on Databases and click on New database

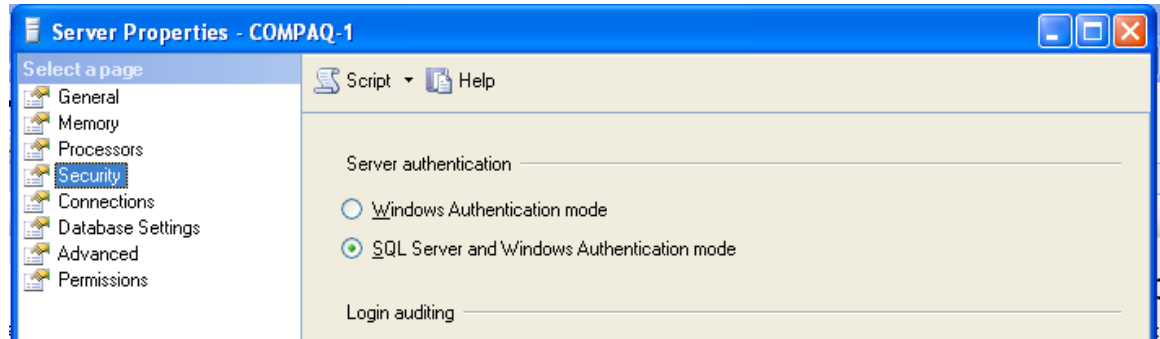


6. Enter database name as centric\_crm.

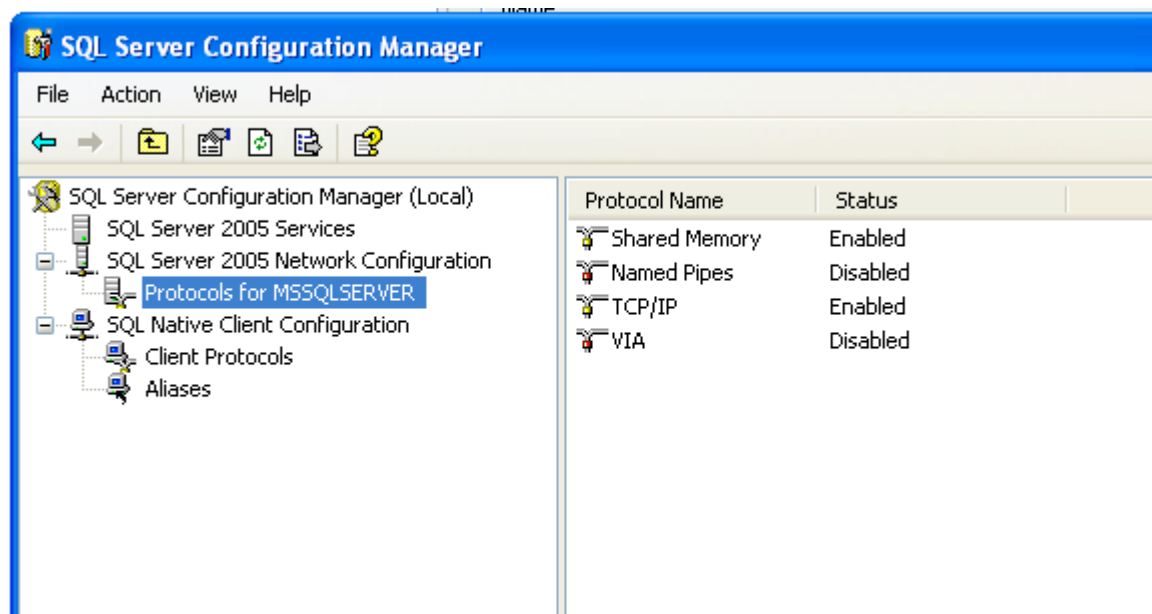




7. Click "OK".
8. Make sure that both the SQL Server and Windows Authentication mode is selected as shown below from the server installation. If this was not set during the installation of the server it is easily changed



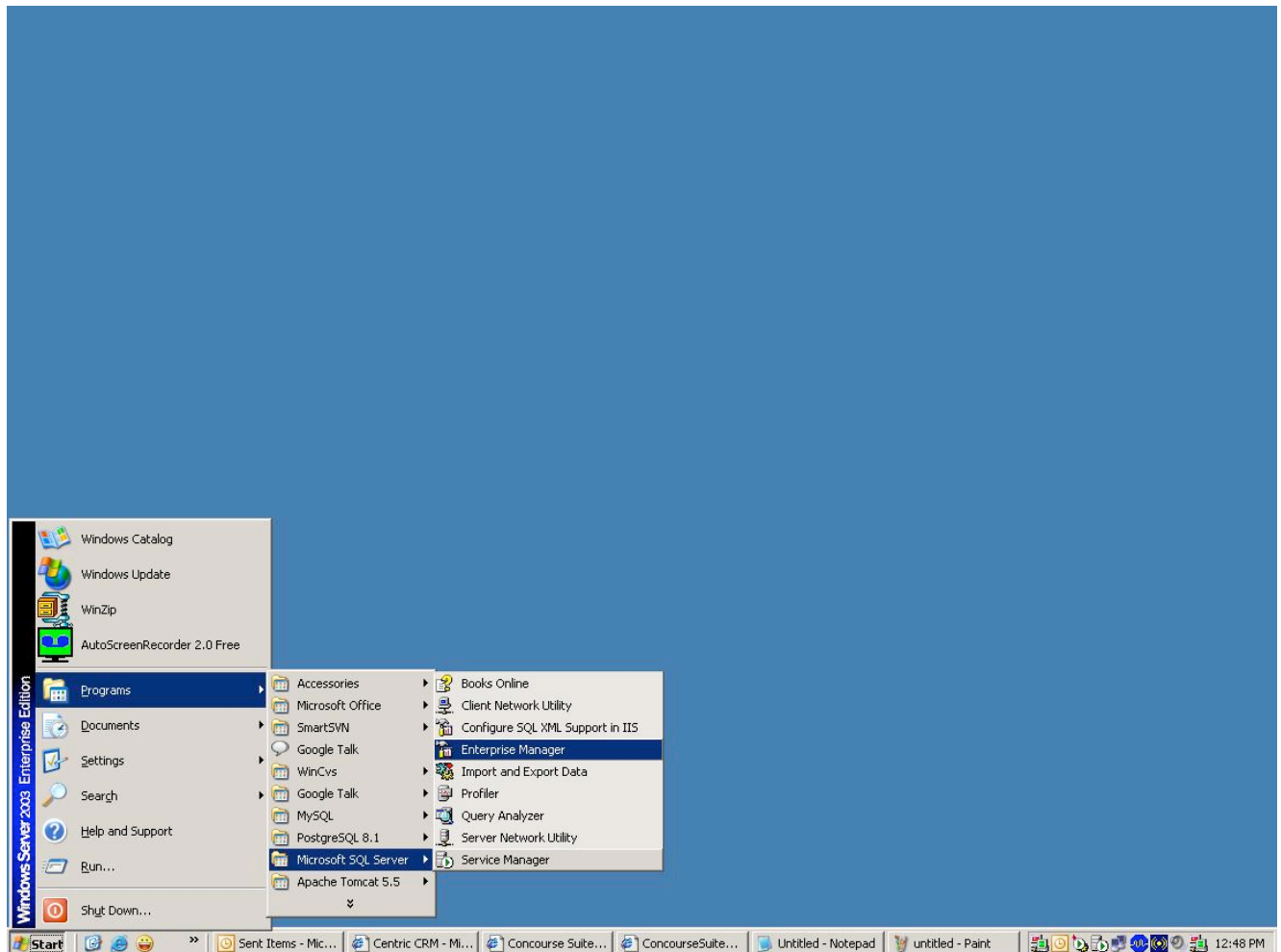
9. In order for Concourse Suite to communicate with the database the TCP/IP functionality must be enabled. You can use the SQL Server Configuration Manager to enable this database functionality



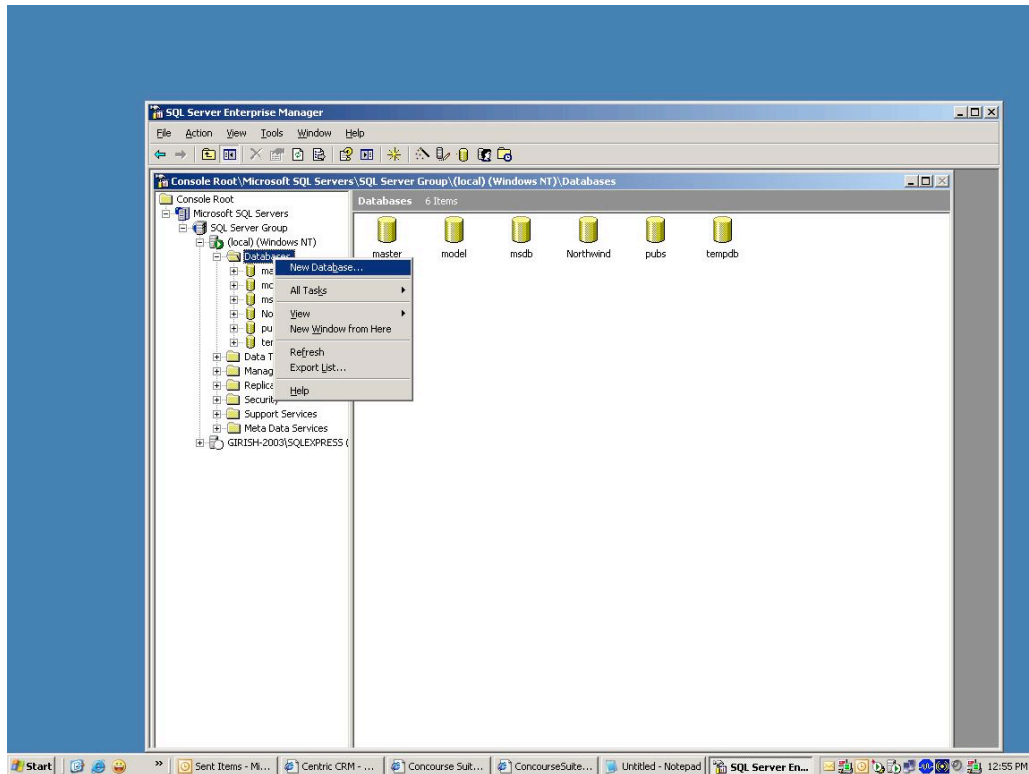
# Microsoft SQL Server 2000

## Installation Steps:

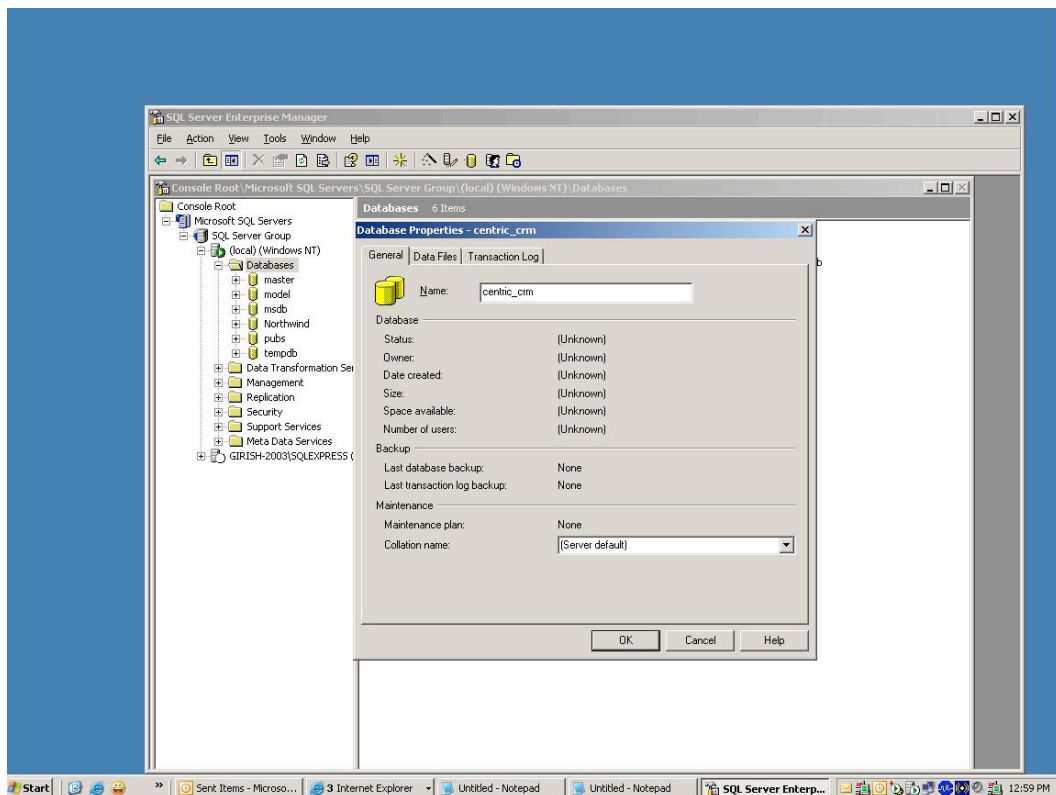
1. Install Microsoft SQL server 2000
2. From start ->Programs -> Microsoft SQL server 2000, select the SQL server management studio "Enterprise Manager"



3. Select SQL authentication
4. Enter username and Password and click on connect
5. Right click on Databases
6. Click on New database



7. Enter “centric\_crm” as the database name and click “OK”.



## Microsoft SQL Server DE (MSDE)

### Installation Steps:

1. Install MSDE, make sure TCP/IP connections are enabled in setup.ini with the following entries:

```
DISABLENETWORKPROTOCOLS=0  
SECURITYMODE=SQL
```

2. Using osql.exe, create a user named “centric\_crm” and remember the password used:

```
EXEC sp_addlogin 'centric_crm', 'centric_crm', 'master', 'us_english'  
GO
```

3. Using osql.exe, create a database called “centric\_crm”:

```
CREATE DATABASE centric_crm  
GO
```

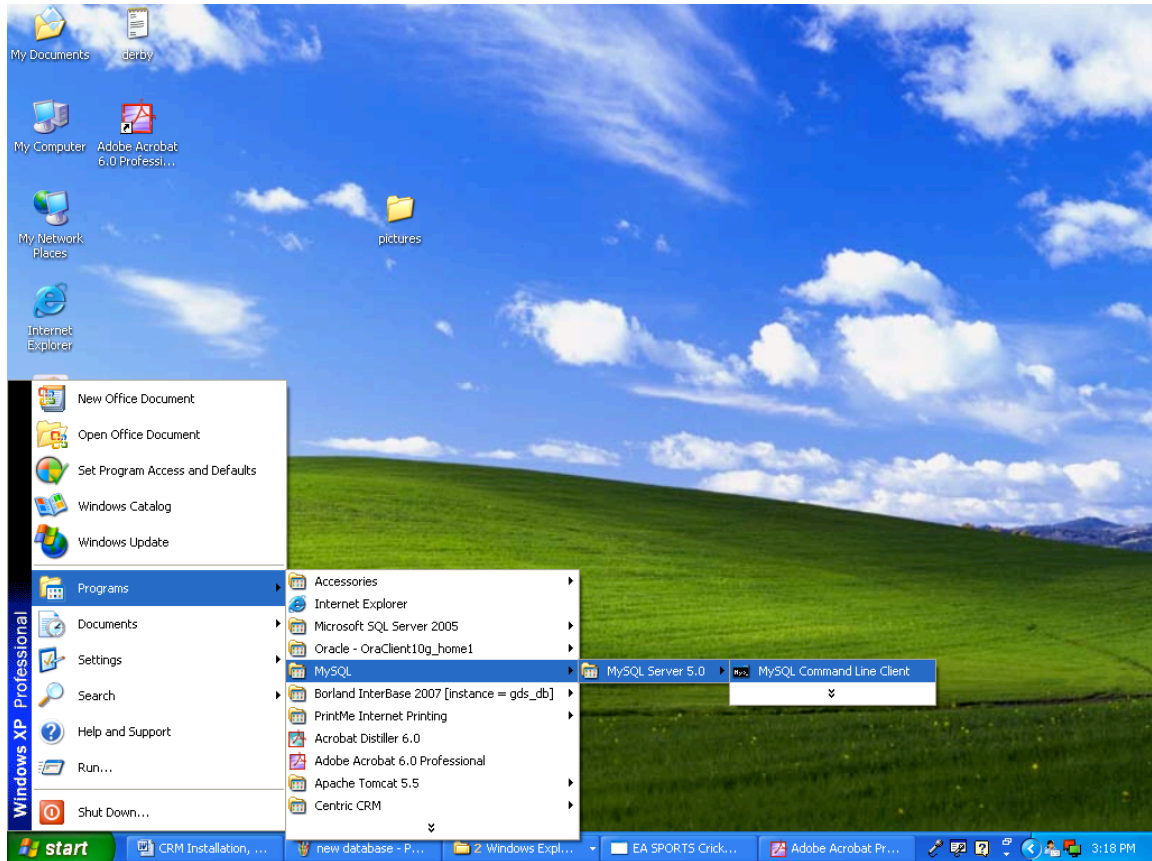
4. Under the database “centric\_crm” add the user “centric\_crm” with “dbo” permissions:

```
USE centric_crm  
GO  
EXEC sp_grantdbaccess 'centric_crm', 'centric_crm'  
GO  
EXEC sp_addrolemember 'db_owner', 'centric_crm'  
GO
```

# MySQL 5.0

## Installation Steps:

1. Install MYSQL server 5.0
2. From start -> Click Programs -> MYSQL -> Mysql server -> Mysql command line client



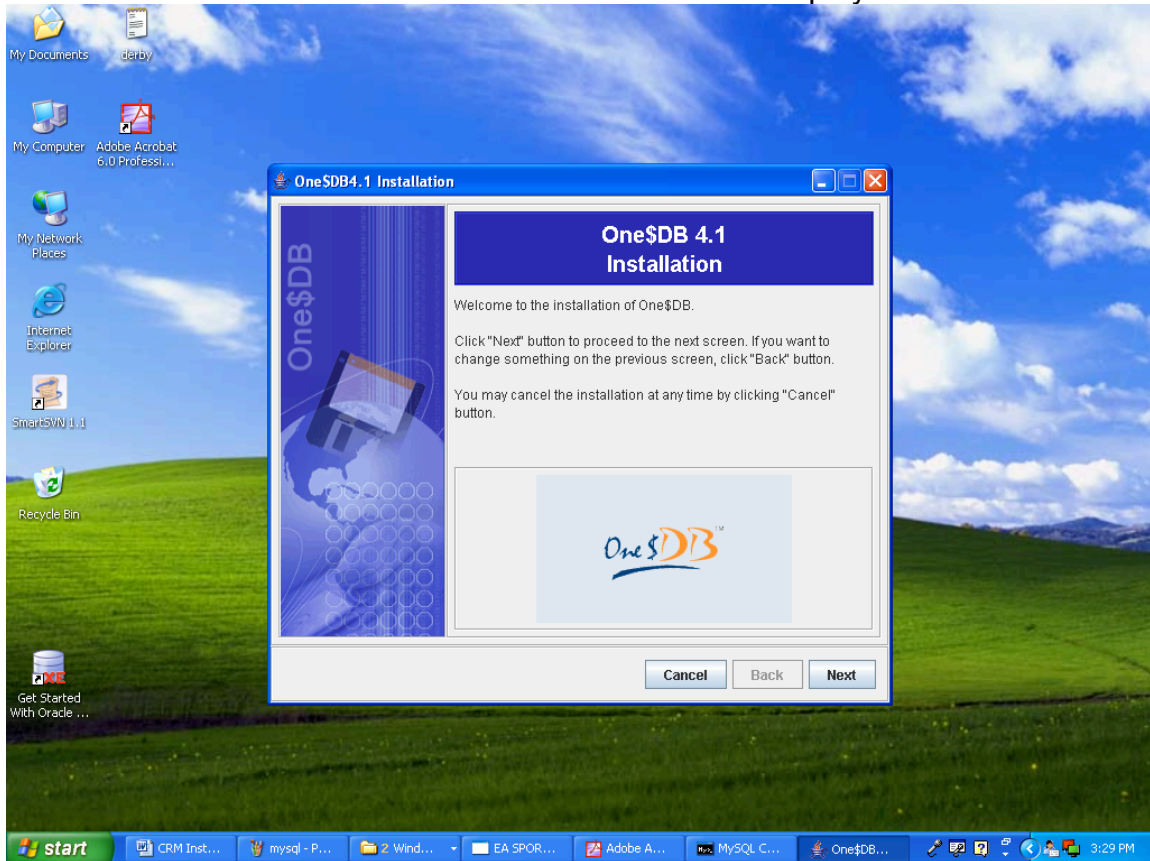
3. Type the below command to create database:  
`CREATE DATABASE centric_crm CHARACTER SET utf8 COLLATE utf8_general_ci`

## Daffodil DB

### Installation Steps:

NOTE: No longer supported – documented for customer convenience only

1. Download Daffodil DB or One Dollar DB4.0 or 4.1\_beta.
2. Click on One Dollar DB4.0 or 4.1\_beta.
3. Welcome screen to start the installation will be displayed.



4. Click on Next. Select yes. Click on next. Click on Next until the installation is completed.
5. DaffodilDB installation is completed.
6. Please note in DaffodilDB, empty database creation is not required as ConcourseSuite will create the database as part of the product's installation.

The Daffodil database must be properly configured for the installation/upgrade to succeed from source code. In the examples below we are using branch50daff as the application name. Substitute the name you are using for your instance of ConcourseSuite where necessary.

The build.properties file should contain the following configuration parameters:

```
## DAFFODIL DB EMBEDDED
```

```
GATEKEEPER.DBTYPE=daffodildb
```

```

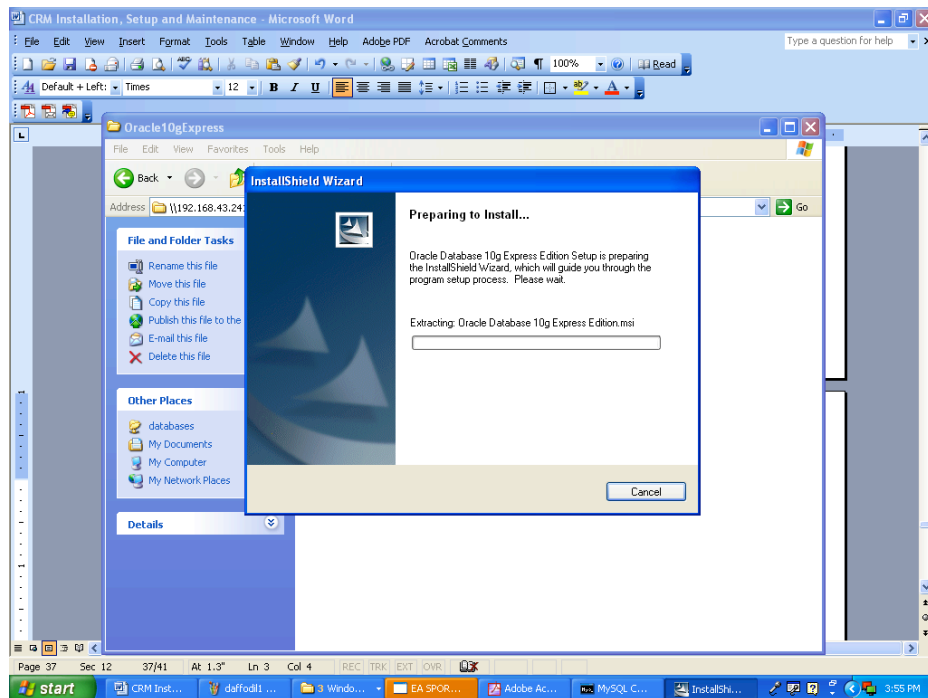
GATEKEEPER.DRIVER=in.co.daffodil.db.jdbc.DaffodilDBDriver
## YOU MUST EDIT THE path in the following line to where you want the
database
## created.
## The user and password must be set to daffodil
GATEKEEPER.URL=jdbc:daffodilDB_embedded:branch50daff;create=true;path=
C:/entricCRM/fileLibrary/branch50daff/daffodildb
GATEKEEPER.USER=DAFFODIL
GATEKEEPER.PASSWORD=daffodil
SITE.DBTYPE=daffodildb
SITE.DRIVER=in.co.daffodil.db.jdbc.DaffodilDBDriver
SITE.URL=jdbc:daffodilDB_embedded:
## YOU MUST EDIT THE path in the following line to where you want the database
## created.
## Ex. Use the same path as Centric CRM's deployed file library, then the name of
## the database, then end in daffodildb
## The user and password must be set to daffodil
SITE.APPEND=;create=true;path=C:/CentricCRM/fileLibrary/branch50daff/
SITE.USER=DAFFODIL
SITE.PASSWORD=daffodil
Please make sure that you install DB under fileLibrary as Main application use
fileLibrary path for access to DB:
GATEKEEPER.URL=jdbc:daffodilDB_embedded:branch50daff;create=true;path=
C:/CentricCRM/fileLibrary/branch50daff/daffodildb
C:/CentricCRM/fileLibrary/ - path to your fileLibrary
branch50daff - by default your application name
daffodildb - name of DB which must use during DB configuration in the installer
GATEKEEPER.USER=DAFFODIL - db user name
GATEKEEPER.PASSWORD=daffodil - db user password
SITE.APPEND=;create=true;path=C:/CentricCRM/fileLibrary/branch50daff/
SITE.USER=DAFFODIL
SITE.PASSWORD=daffodil
The same properties as above without the database name in the SITE.APPEND

```

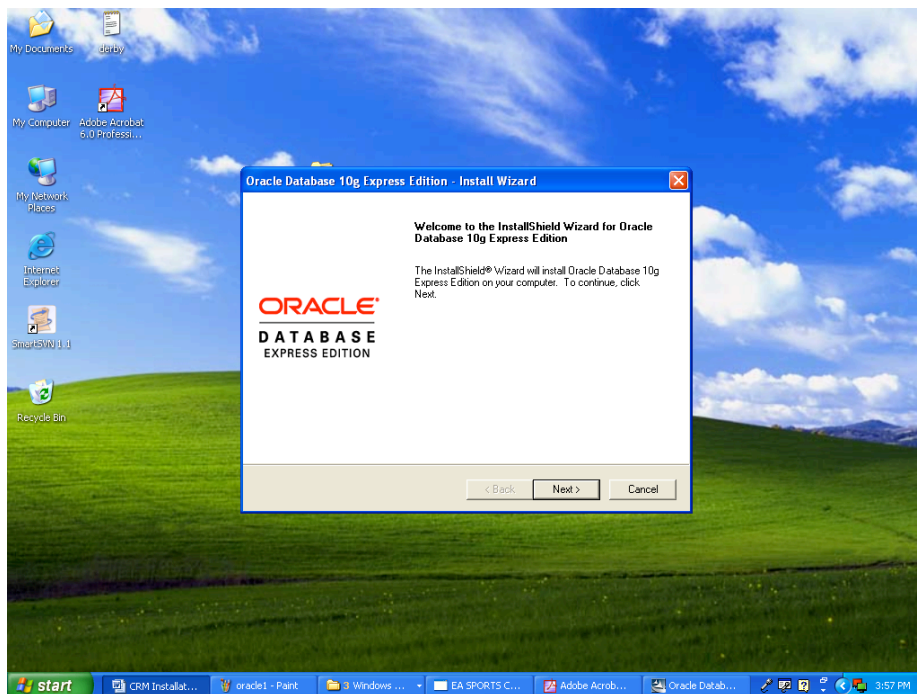


## Oracle 10G Express Installation Steps:

1. Click on the Oracle 10G express install file.

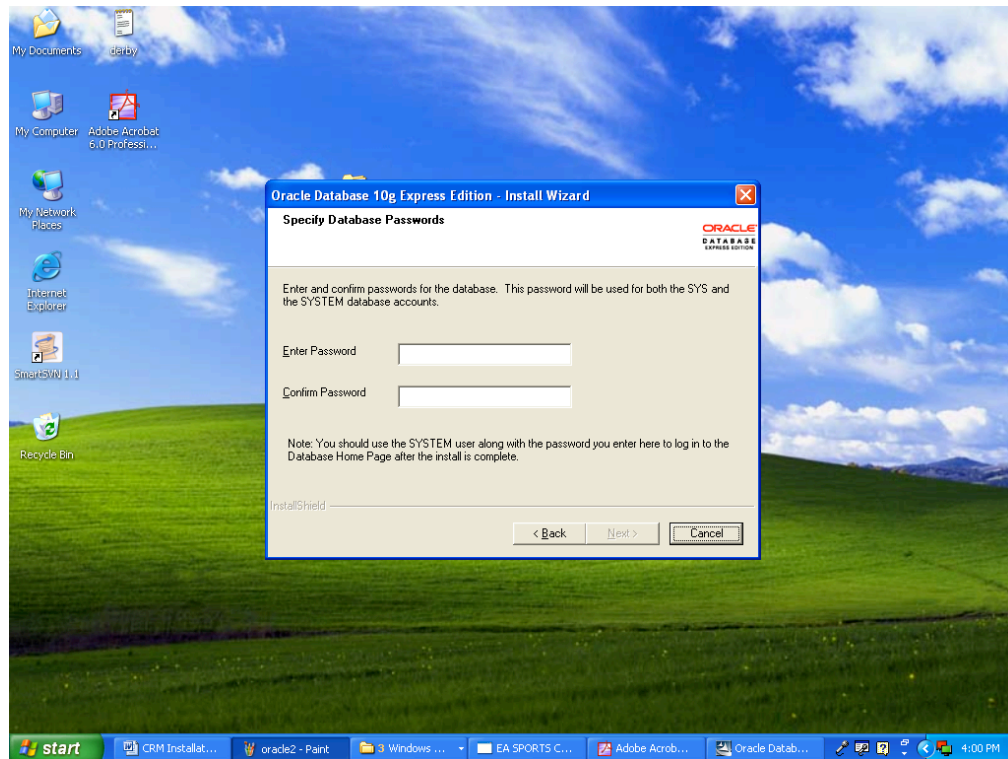


2. Click on Next

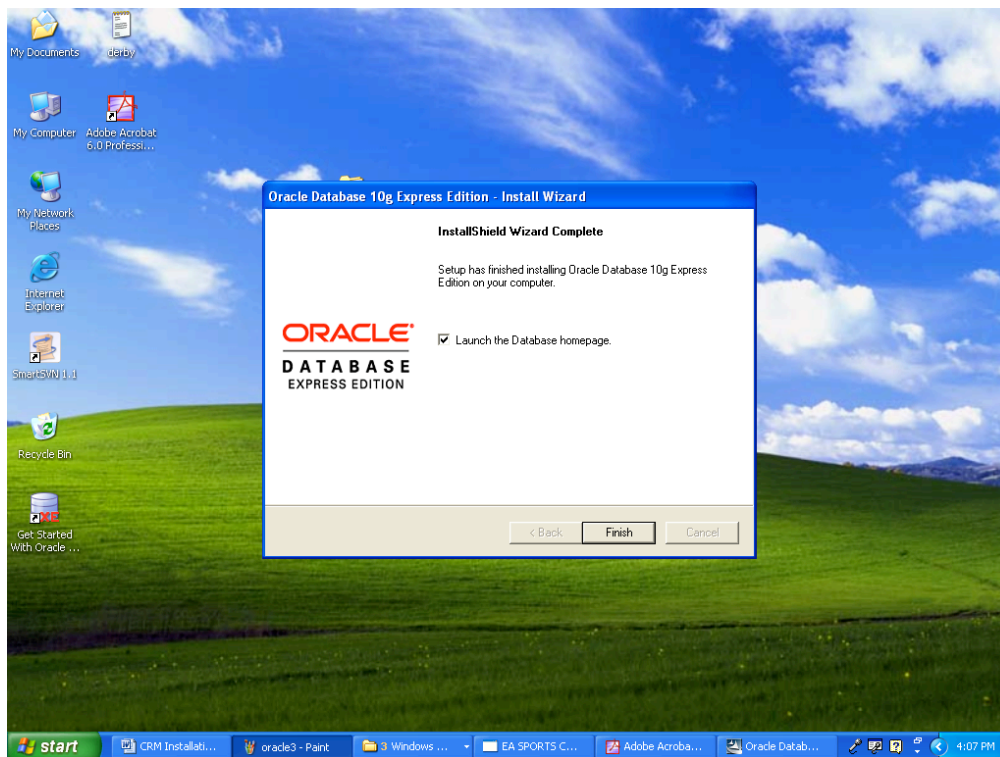


3. Select "I accept the agreement".
4. Click Next until the Installation prompts for a password.





5. Enter Password twice. Click on Next.
6. Click on Install. Installation will be completed successfully.



7. Please note Oracle 10G Express will have a default database XE. During the installation of ConcourseSuite you have to enter database name as XE, the user name as system and the password as the one you specified in step 4 when the installer prompts for the database settings.

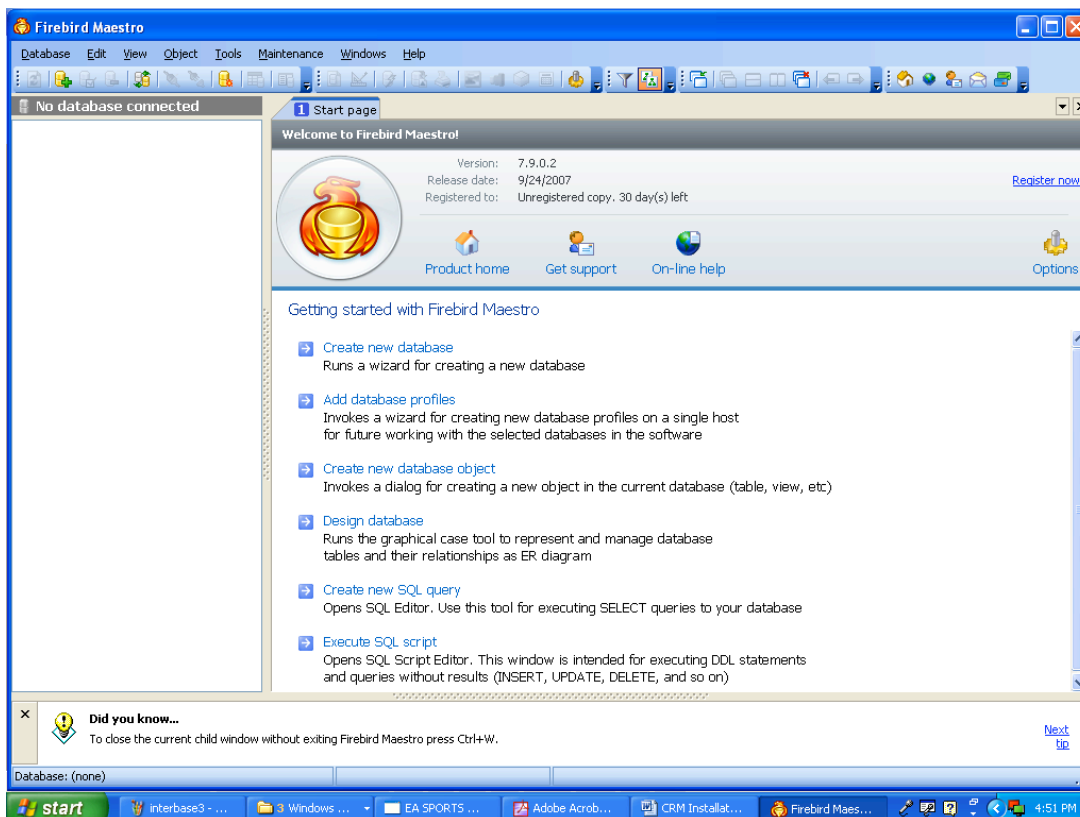
NOTE: There is no need to create an empty database for ConcourseSuite when using the database server.

## FireBird

### Installation Steps:

NOTE: No longer supported – documented for customer convenience only

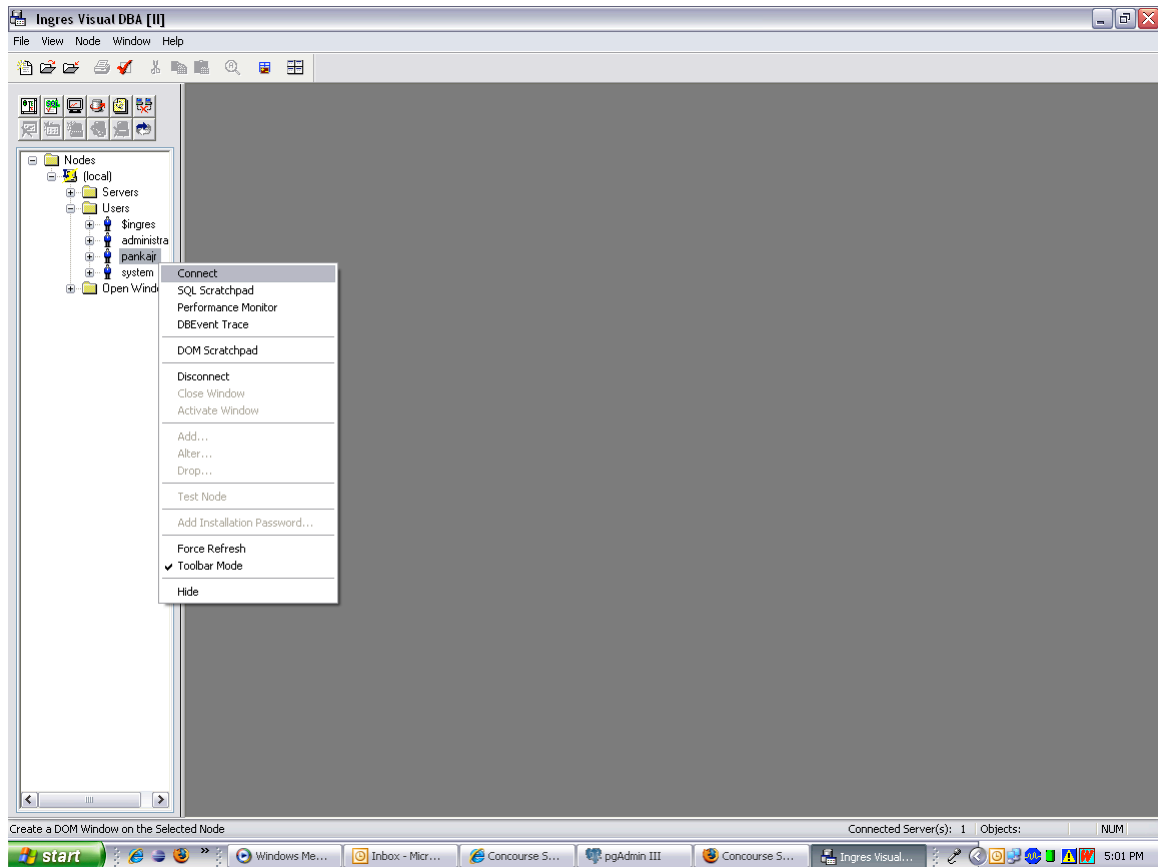
1. Install Firebird.
2. Install the Maestro tool.



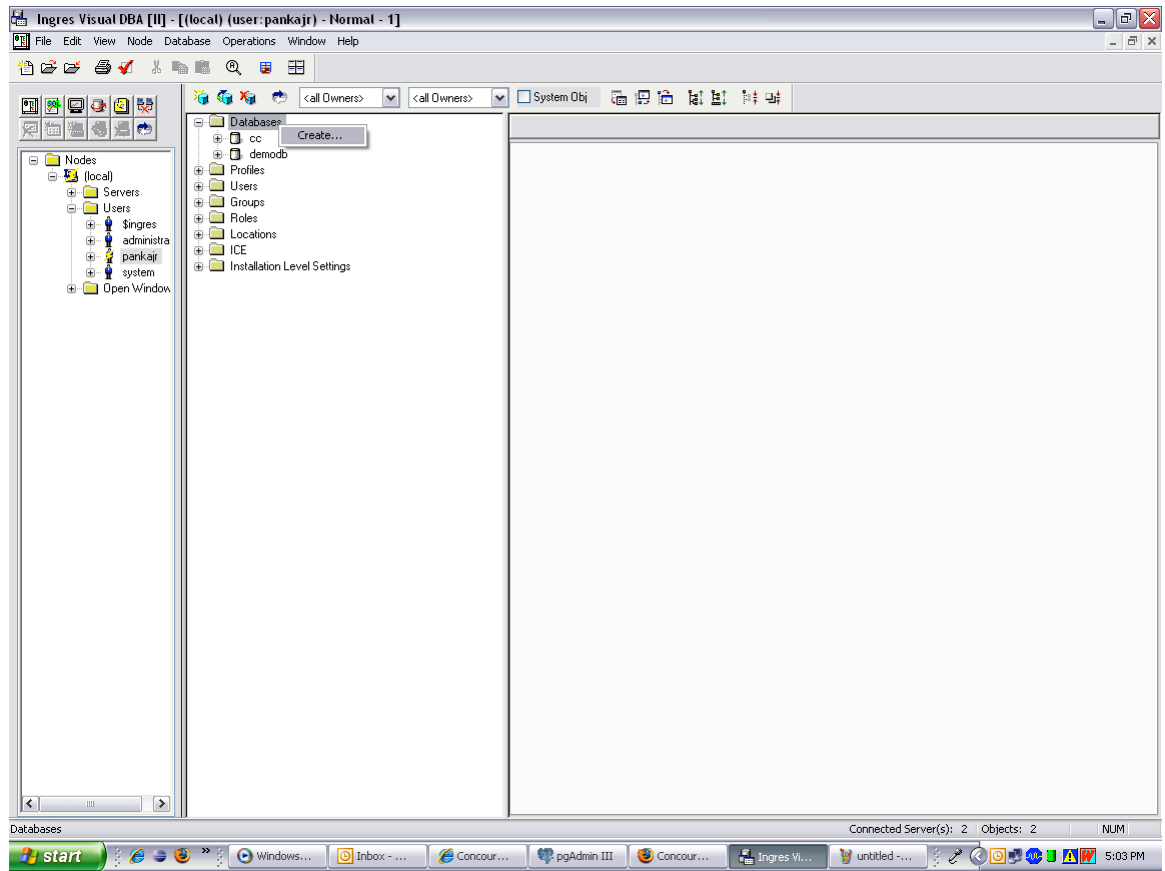
3. Click on Create new Database link.
4. Browse the path to store the database and enter the database name as "centric\_crm".
5. A database will be created successfully.
6. When the ConcourseSuite installer prompts for the database settings, you have to enter the database name as "centric\_crm" (specify the full path of the database like e:\centric\_crm), the user name as "sysdba" and the password as "masterkey".

## Ingres Database Installation Steps

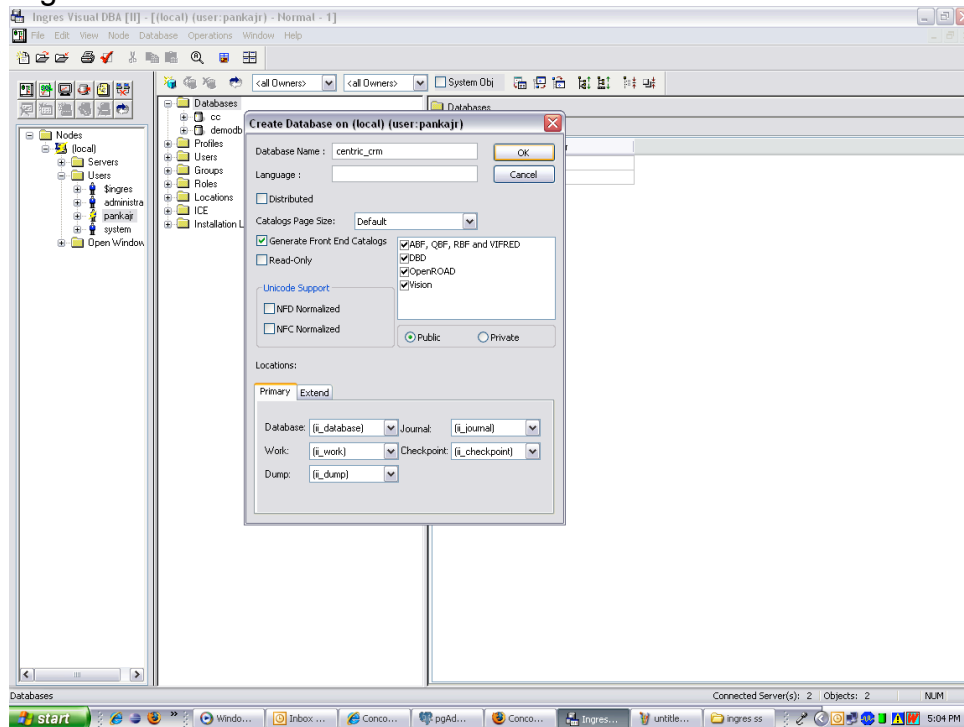
1. Install Ingres
2. Open Ingres Visual DBA



3. Select a User, right click and then click on connect

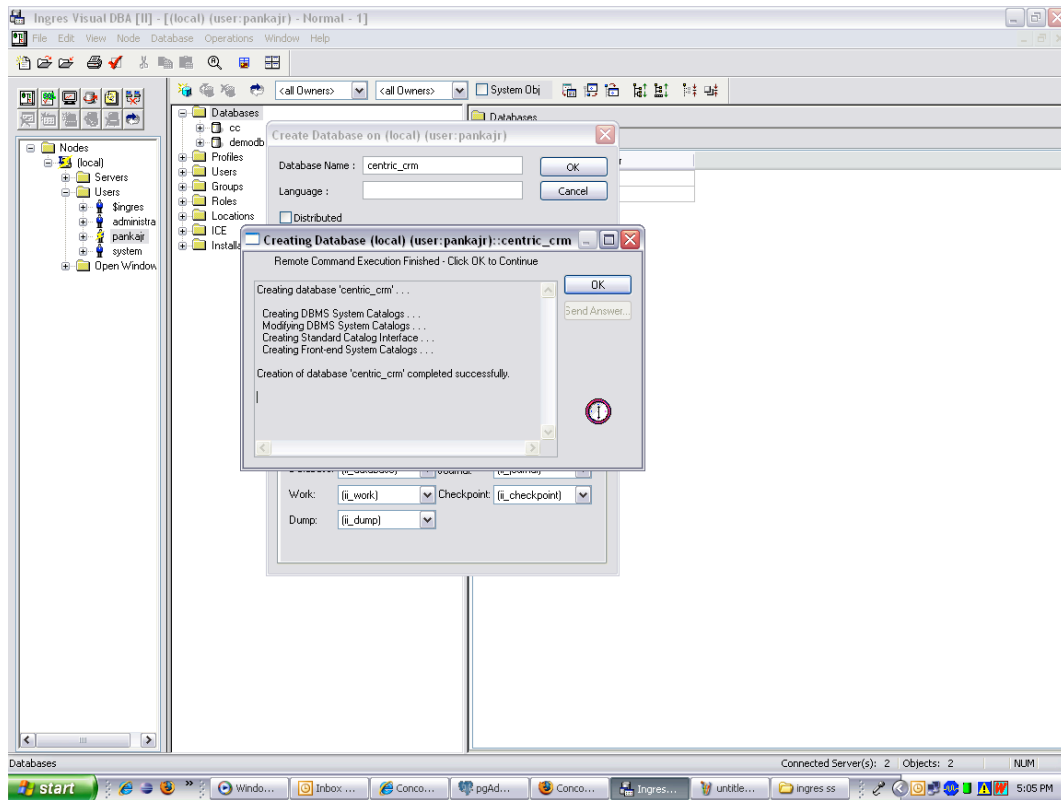


4. Right click on Databases and then click on Create.



5. Enter the database name as "centric\_crm".

6. Click on OK

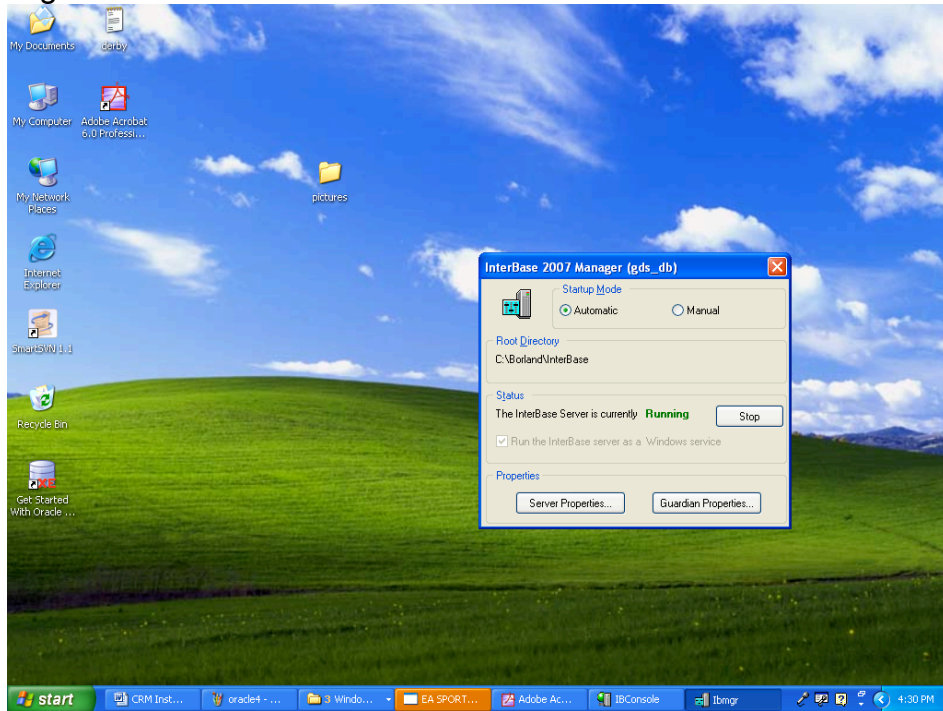


7. The database will be created.

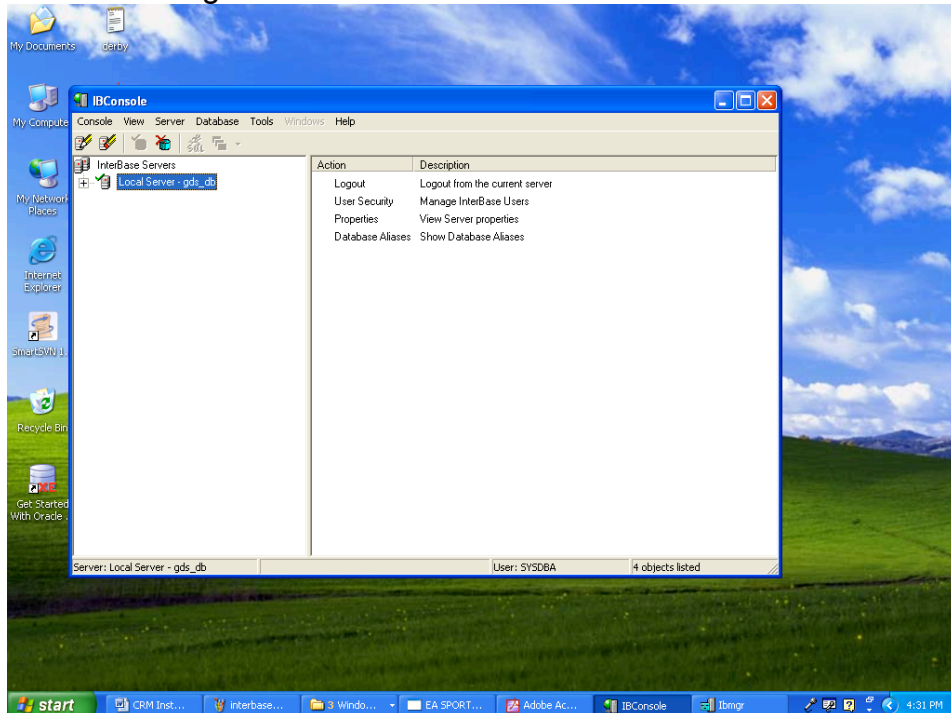
## Interbase Database Installation Steps

NOTE: No longer supported – documented for customer convenience only

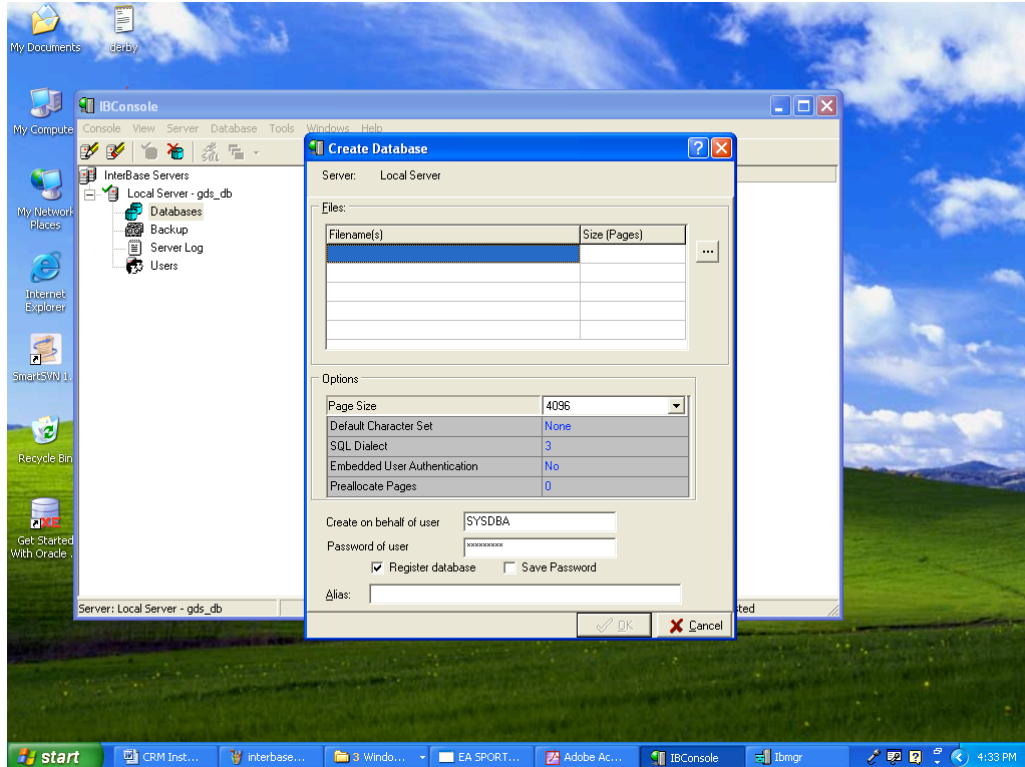
1. Install Interbase
2. From Start -> Programs -> Borland Interbase 2007 click on Interbase server manager



3. Click on start
4. From start -> Programs -> Borland interbase 2007 -> click on IB console



5. Double Click on the Local Server.



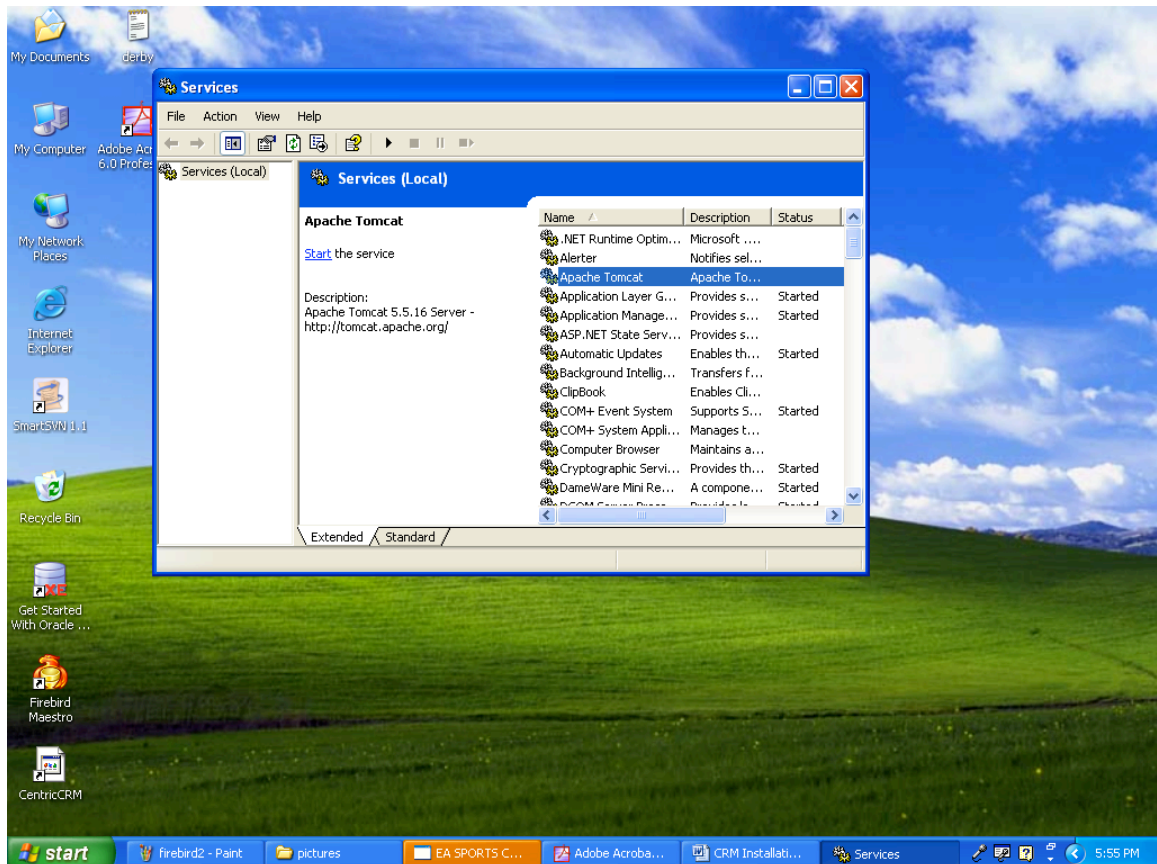
6. Right Click on Databases and then select create.
7. Browse the path and specify database name as centric\_crm. Specify the alias name as "centric\_crm". Click on ok.
8. Database will be created successfully.
9. When the ConcourseSuite installer prompts for the database settings, you have to enter the database name as "centric\_crm" (specify the full path of the database like e:\centric\_crm), the user name as "sysdba" and the password as "masterkey".



# Configuring ConcourseSuite

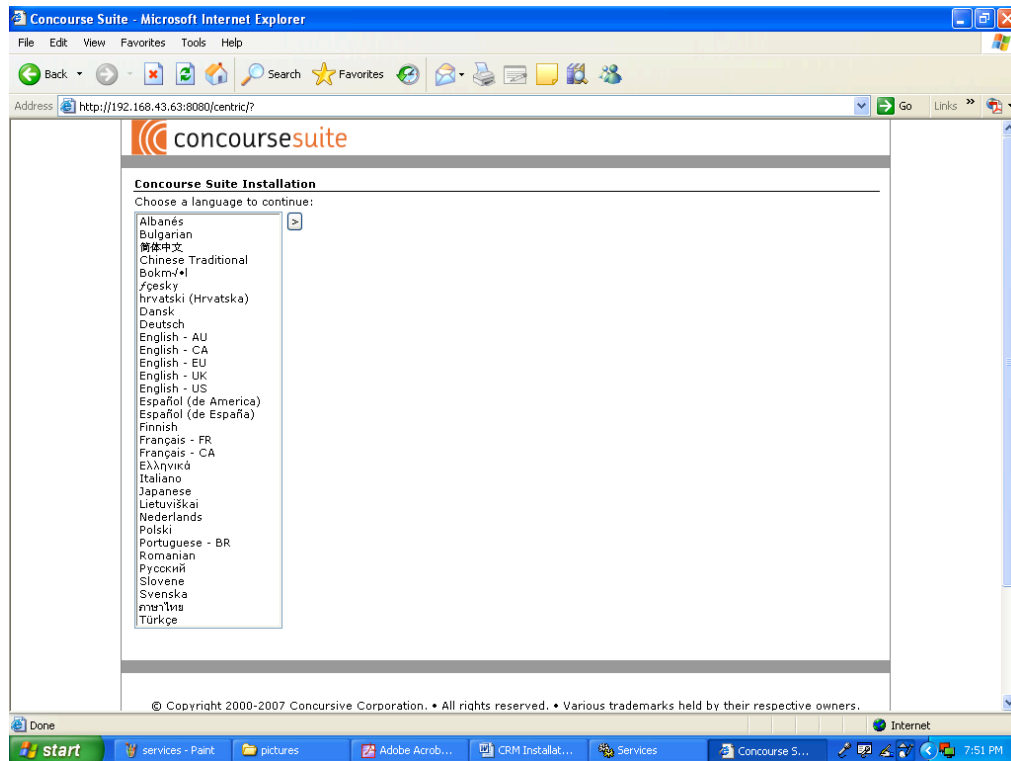
## Installation steps

1. Remove the centric folder in Tomcat / Webapps and Work folder.
2. Copy latest concourse.war file into the Tomcat webapps folder.
3. Start the Tomcat services.

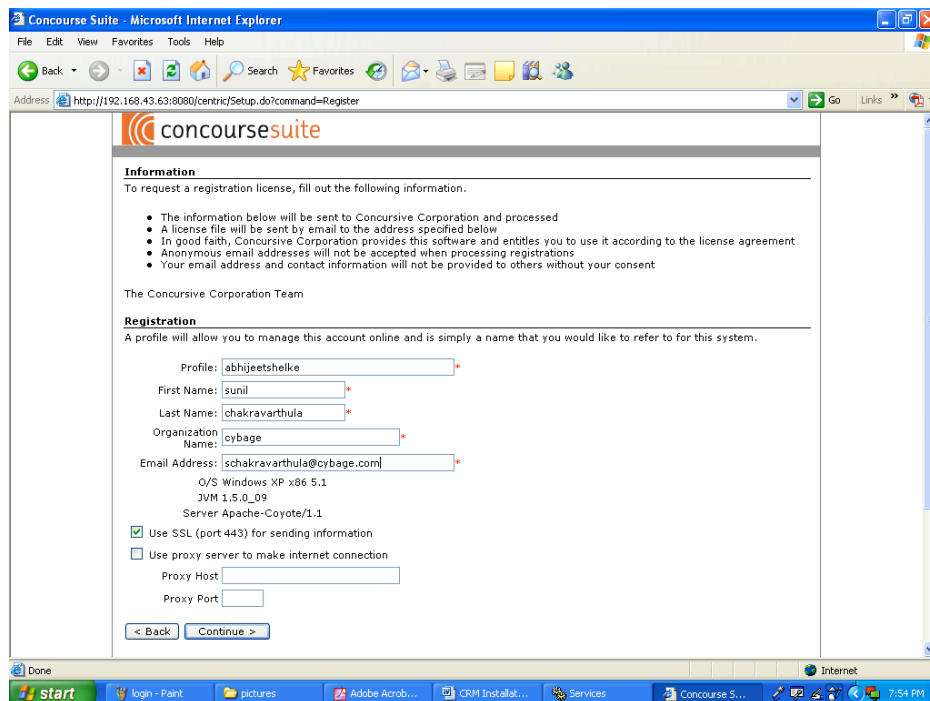


4. Start a web browser and enter the address <http://localhost:8080/centric>.





5. Select English – US and then click the arrow to continue.



6. Enter your contact information and then click Continue. Click Continue again.

7. Within a few minutes you should receive an email with a license file attached. Copy the contents of the license and paste it into the box the ConcourseSuite installer is displaying. NOTE – due to a recent relocation and reassignment of our mail server IP addresses some services have tagged our server as using a dynamic IP and hence may inadvertently tag the message as spam. If you do not receive your license in a reasonable time then use your browsers back button and then try a different email address (hotmail or gmail are good alternatives).
8. Click on Continue. Click on Continue
9. Enter the target directory
10. Click on continue. Click on Continue

Concourse Suite - Microsoft Internet Explorer

File Edit View Favorites Tools Help

Back Forward Stop Reload Home Search Favorites

Address <http://192.168.43.62:8080/centric/SetupServerDetails.do?command=ConfigureServerCheck> Go Links

**concourse suite**

**Concourse Suite Configuration (Step 2 of 4)**

**Server Settings**

Concourse Suite interacts with various servers and services that must be defined.

**Default Time Zone**

Each user in Concourse Suite can configure the time zone in which they are currently in. What should the default time zone be set to for new users?

- Users will still be able to change their time zone, but for new users this setting will be used as the default
- Dates and times will be displayed according to the user's configured time zone

Time Zone:

**Default Language/Locale**

All locale formatting in Concourse Suite is currently defaulted to a single locale. Which language and locale should Concourse Suite use?

Language/Locale:

**Default Country**

Which country should Concourse Suite use as the default for mailing addresses?

Country:

**Default Currency**

All money in Concourse Suite is currently defaulted to a single currency. Which currency should Concourse Suite use?

Currency:

**Email Server**

Concourse Suite sends various notifications to users by email. Concourse Suite can also be used to send email to contacts that have been entered into Concourse Suite. Which email server should Concourse Suite use?

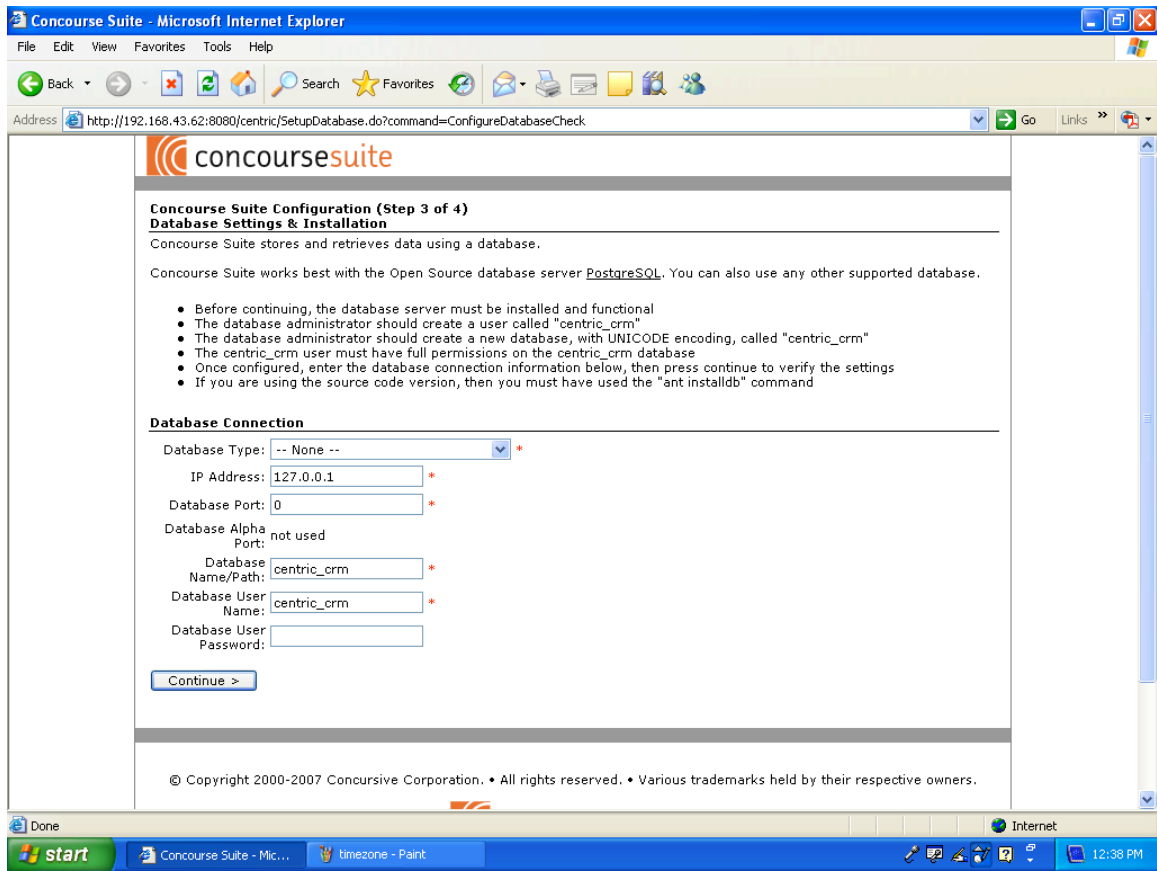
- The specified server must allow this server to relay email

Done Internet

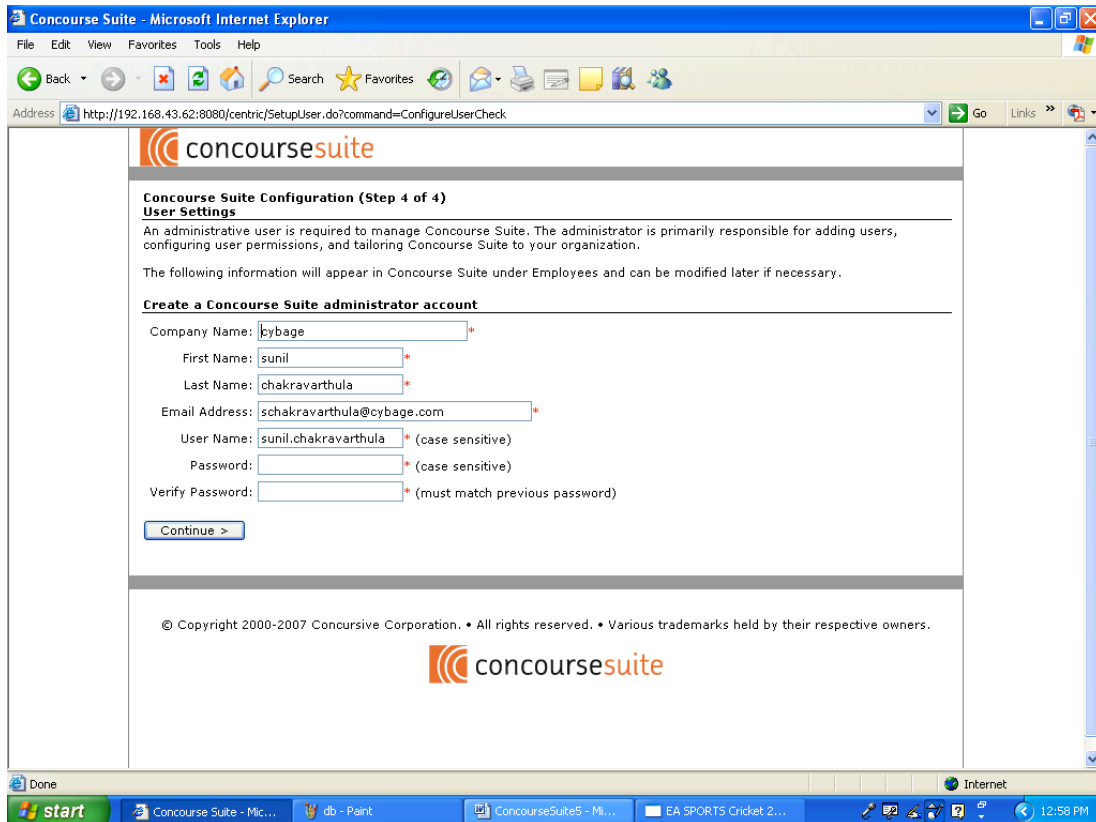
start ConcourseSuiteS - Mi... Concourse Suite - Mic...

12:08 PM

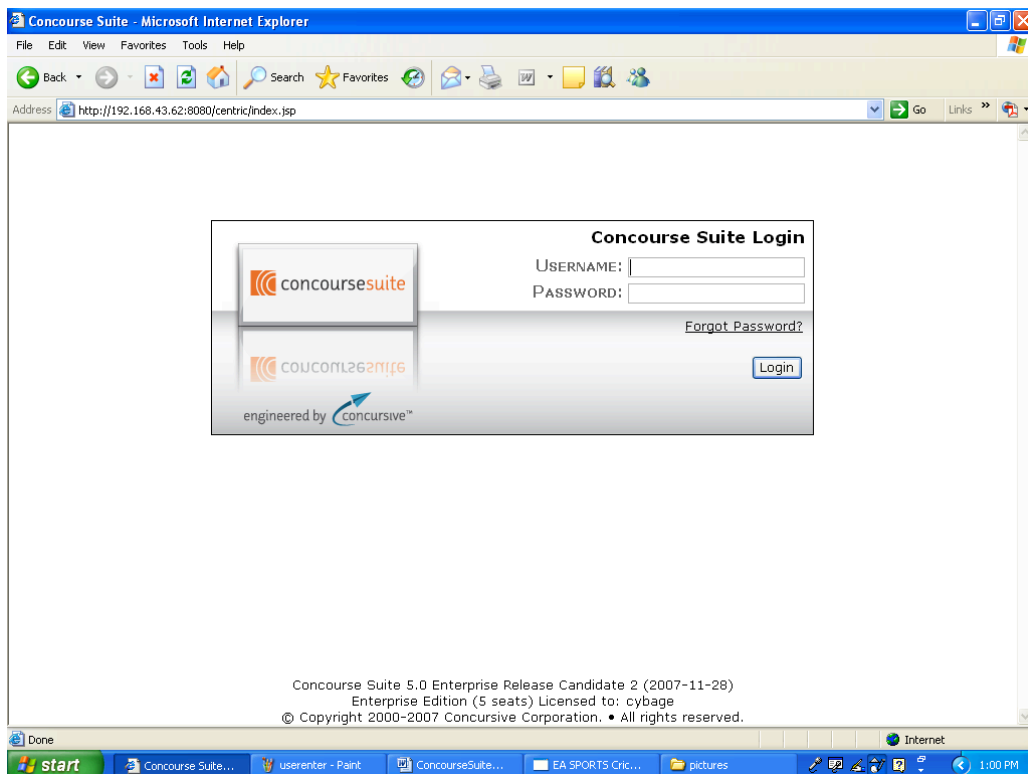
11. Select the time zone. Enter a domain name, email address and other site-specific information as necessary. Click Continue.



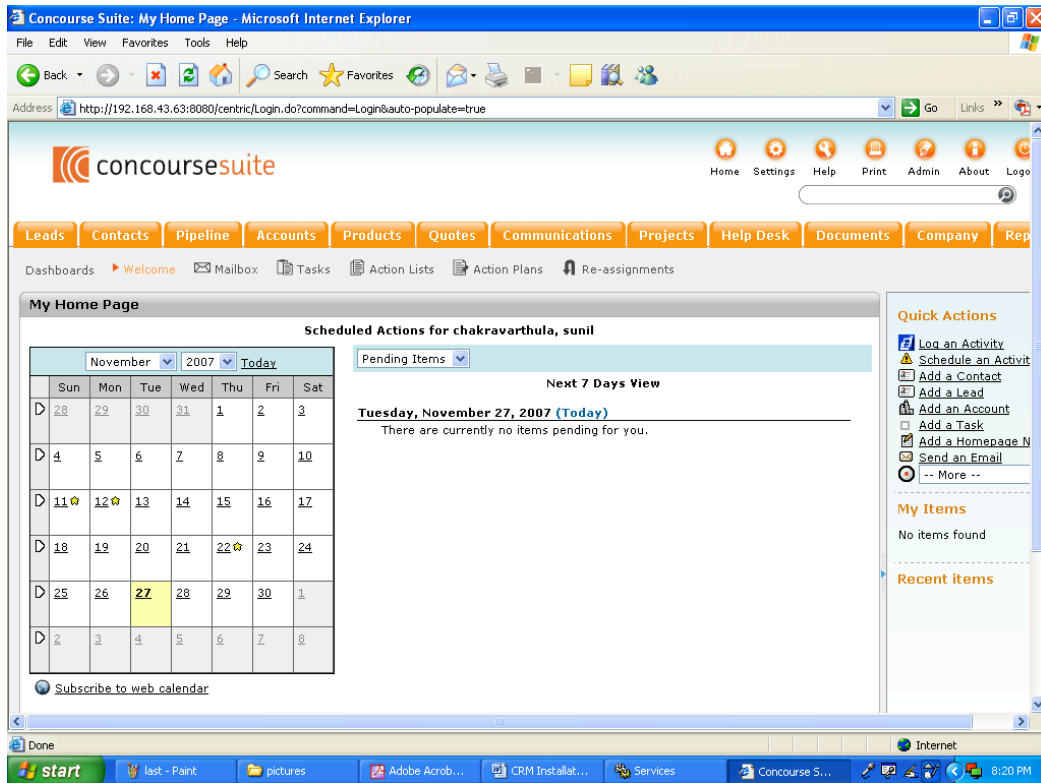
12. Create an empty database for all databases except for Oracle 10G express, daffodil and Derby. For more information on database installation and configuration please refer to the appropriate section in the “Setting up a database server” section of this document.
13. Select the Database type.
14. Enter Username and Password except for daffodil and Derby databases. For more information on Databases Please see “Setting up a database server”.
15. Click Continue. Click Continue again.
16. Once the database is ready, click Continue.



17. Enter Username and Password. Renter Password. Click Continue.
18. Click Continue.



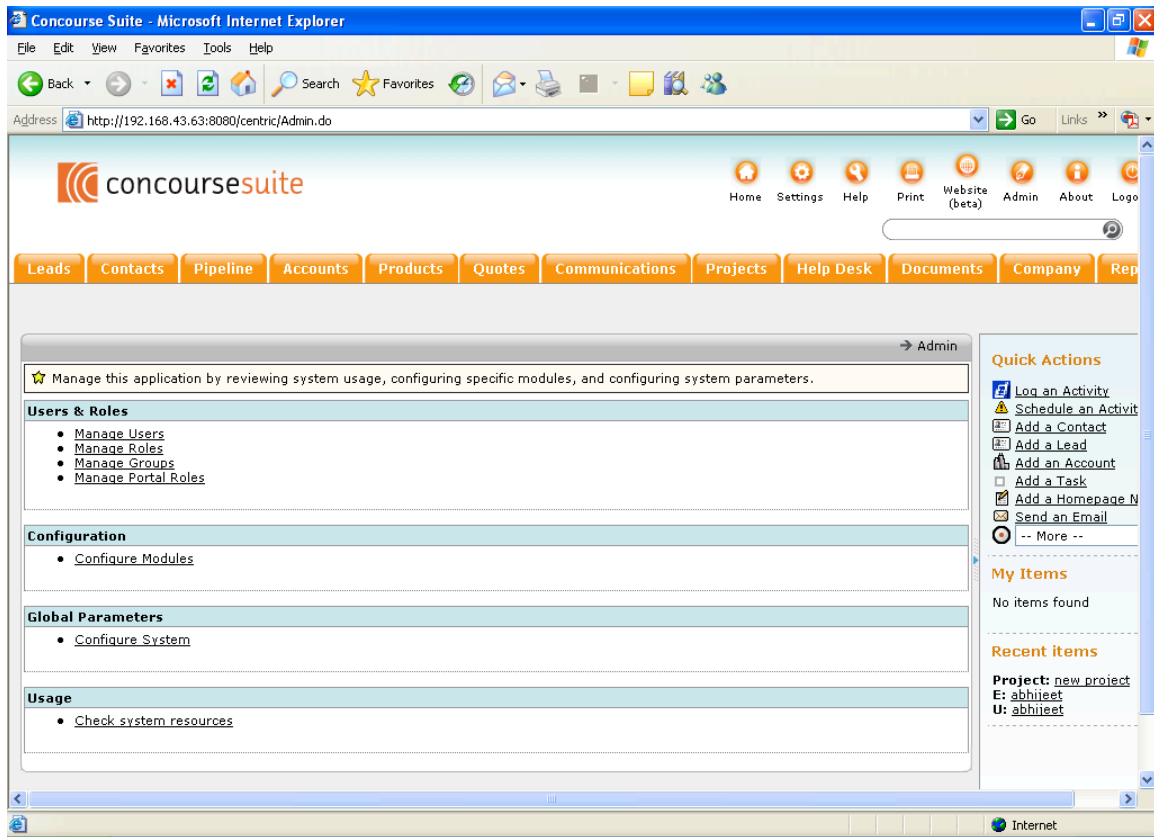
19. Enter the Username and Password and click Login.



22. If you see the above screen, you have successfully installed ConcourseSuite and you are ready to begin using the product.

23. Once ConcourseSuite is setup and you are able to login with administrator access, there are several items that should be configured before users begin to use the system in a production environment.

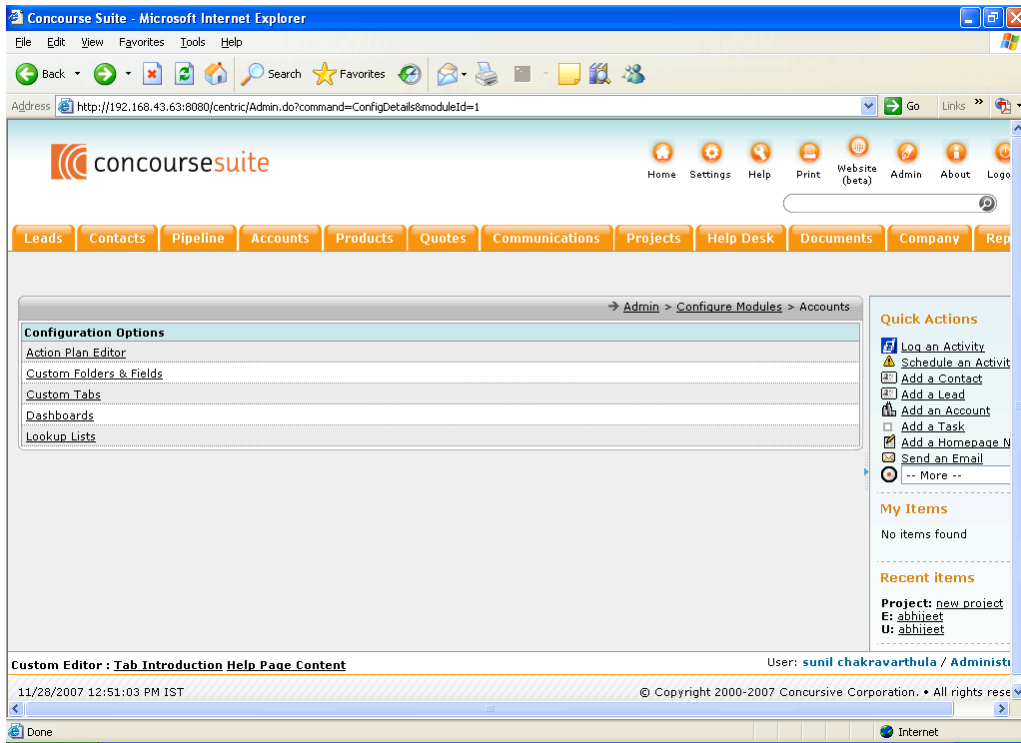
24. Complete the configuration by accessing the Admin tab of the application. Configure modules, roles, and users based upon how your company will use the application.



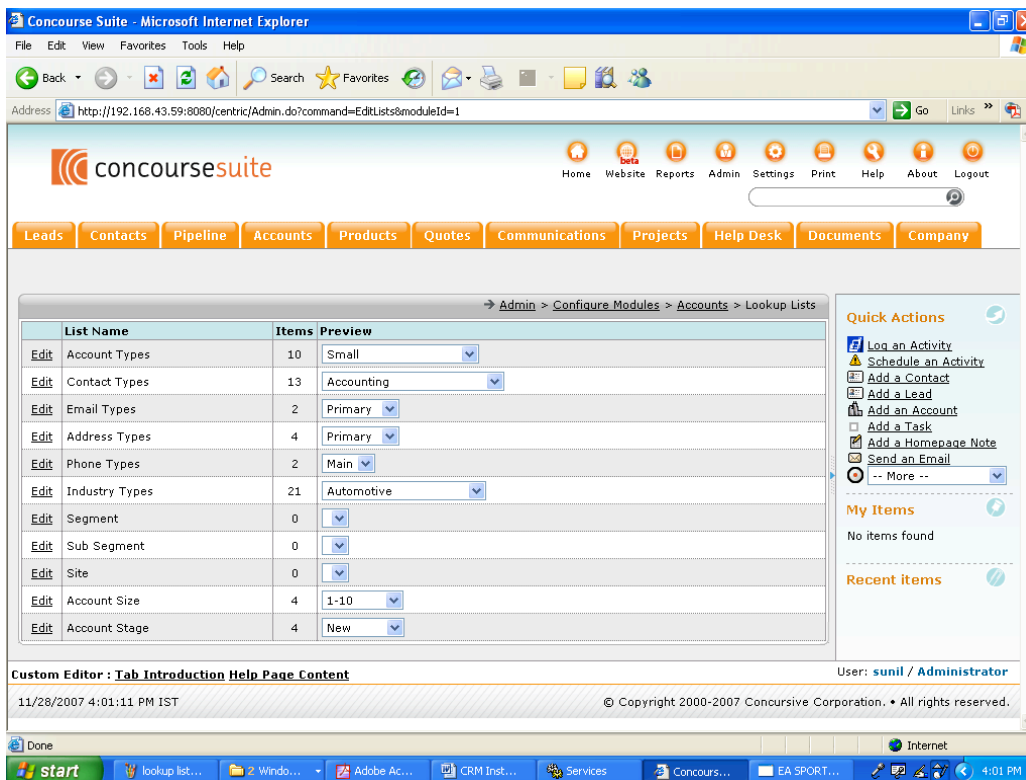
## Configure Lookup Lists

Lookup lists contain the drop-down menu choices that a user will see when adding or modifying data in a module. The administrator should review each Lookup list to understand its use. Values can be added, renamed and removed at any time.

Lookup lists can be found in Admin -> configure modules -> module name



Click on lookup lists. There are a number of lists that are not populated with selections. This provides the Administrator the flexibility to populate those lists with data that is meaningful to their organization.

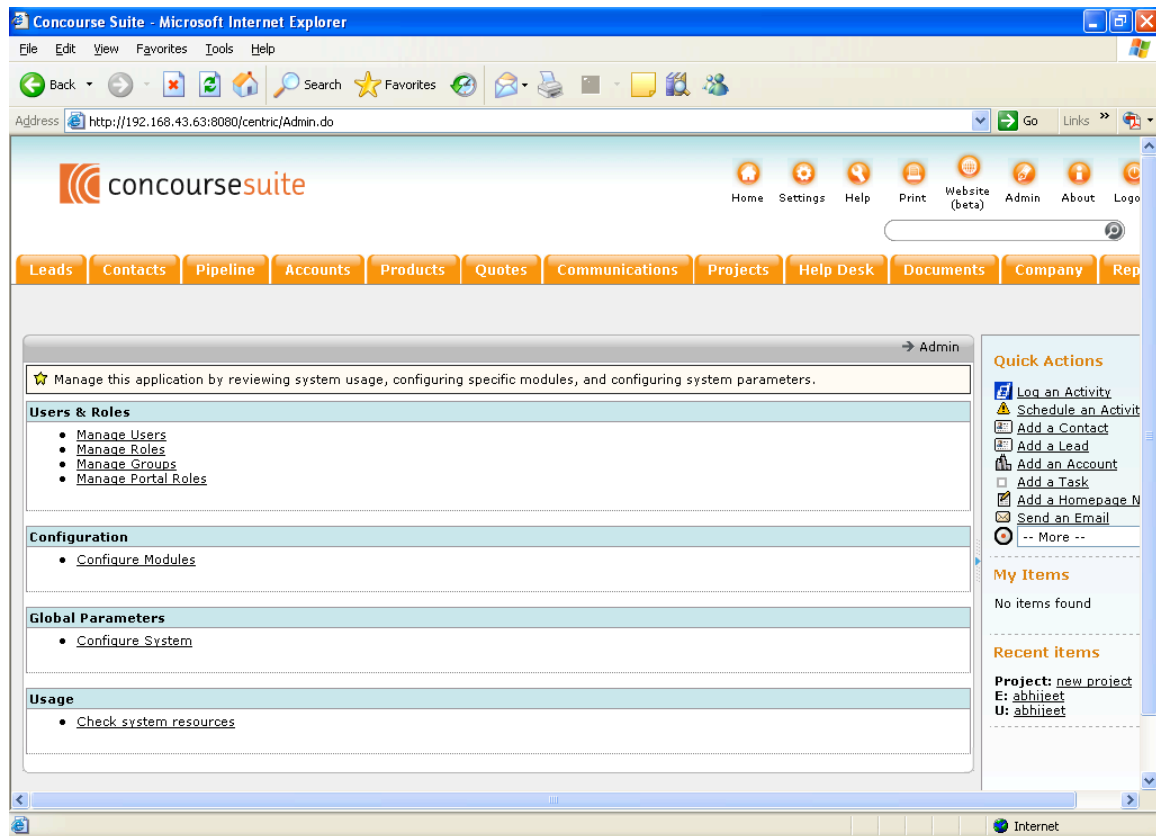


## Configure Custom Folders and Fields

This editor allows you to create custom forms that can be attached to Contacts, Accounts, Employees, Opportunities and Tickets using arbitrary fields.

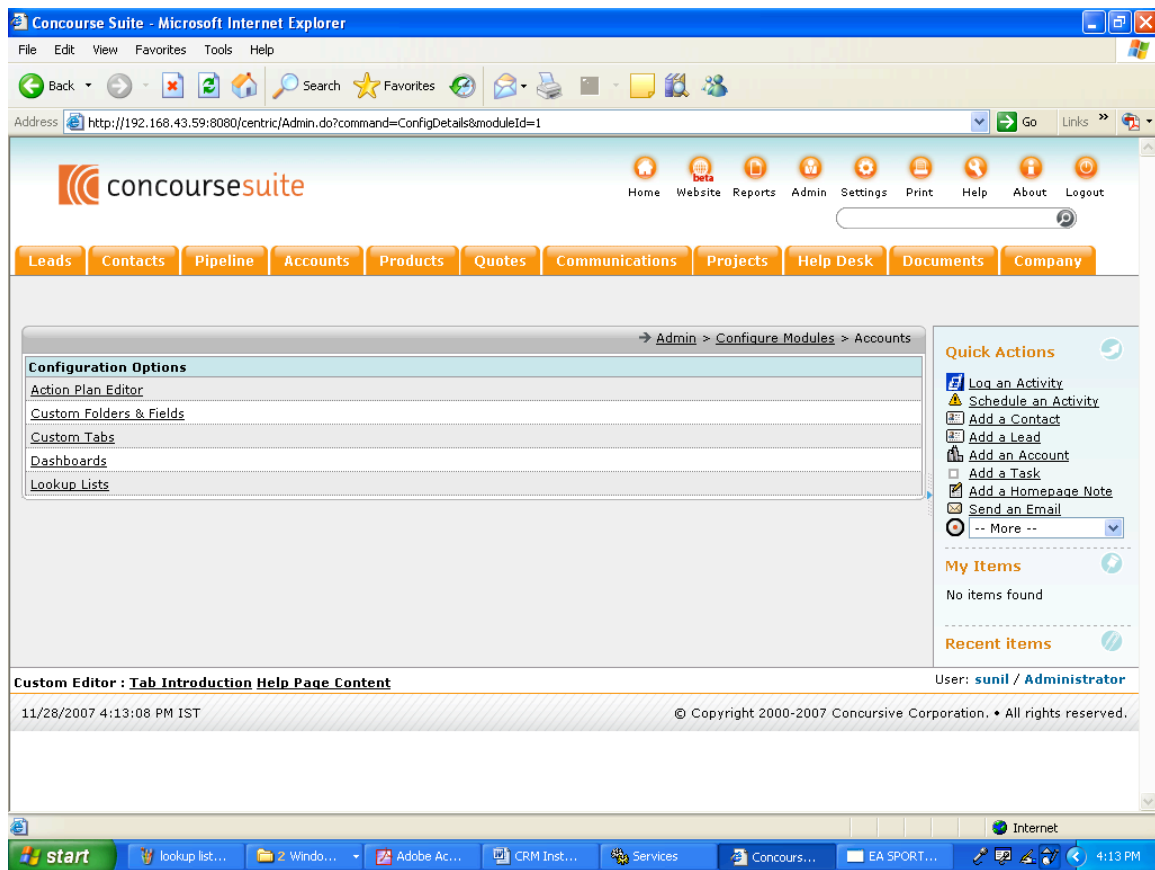
Custom Folders & Fields can be found in Admin -> configure modules -> module name

1. Click on the Admin button at the top of the screen.



2. Click Configure modules.
3. Click Accounts.
4. Click Custom Folders & Fields.





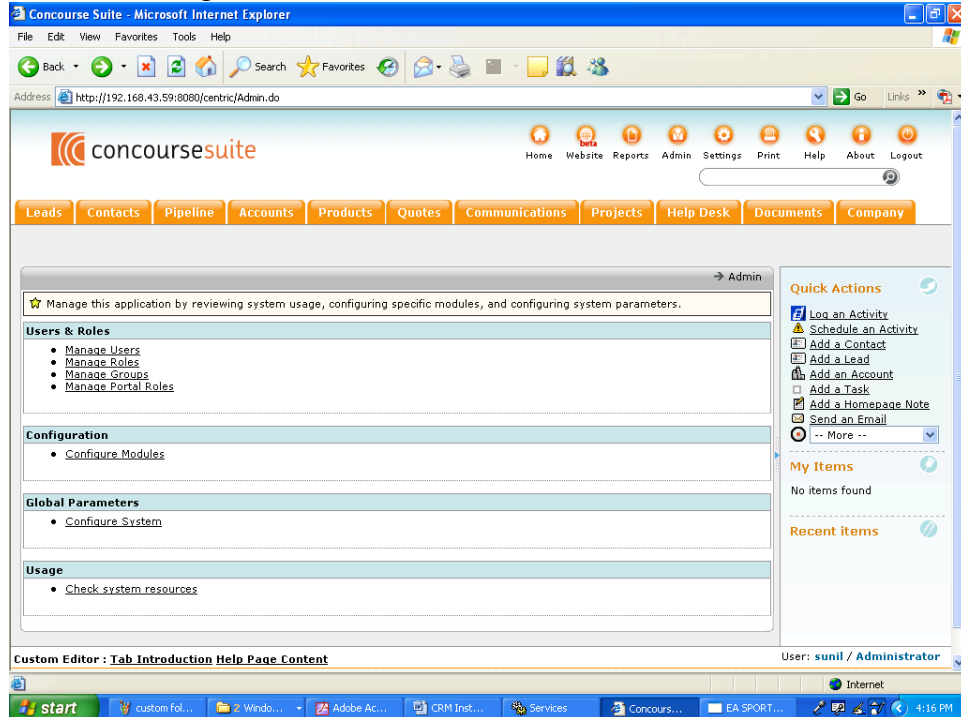
## Configure Dashboards

ConcourseSuite has a new feature that allows the Administrator to configure different views (called dashboards) in most modules. As the Admin, under configure modules, you may choose a module such as “Accounts” and select Dashboards. Some modules have pre-built dashboards (standard) that can be activated. In many cases a custom dashboard can be built for different users and roles. This is a very powerful feature of ConcourseSuite. Permission to view Dashboards must be provided in two separate areas. Each user role can be configured to allow viewing of dashboards on a per module basis. Within each module the dashboard can be configured and you can grant permission for each role to view a custom dashboard within a module on a dashboard by dashboard basis. This permits you to present different views of the same data for different user roles.

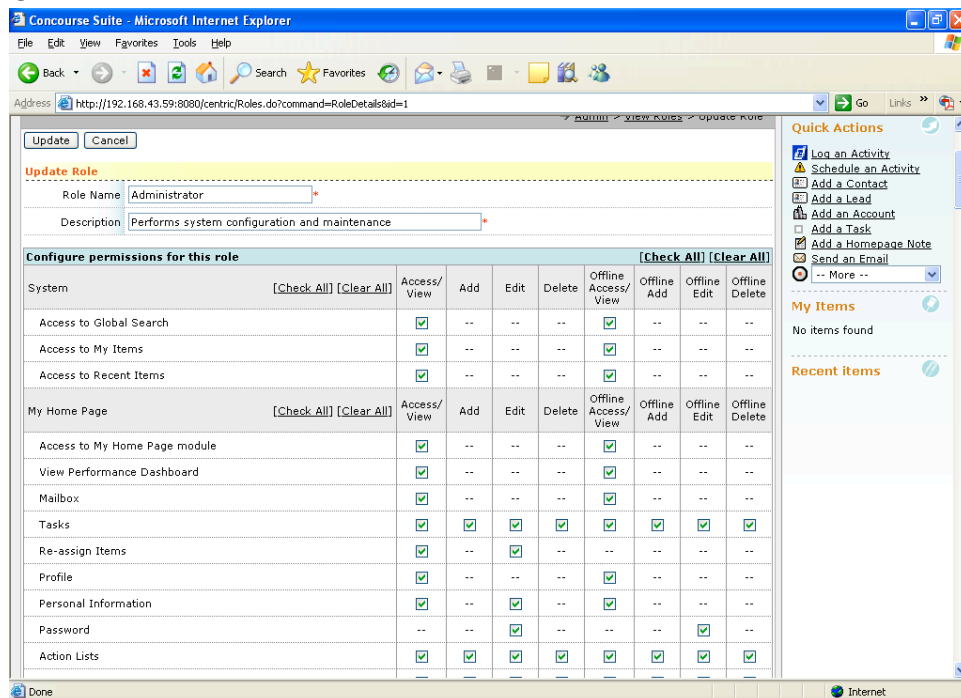
## Configure Roles and Permissions

Preloaded roles can be renamed and modified to meet the needs of your company. Roles allow you to quickly categorize users with access permissions. Review the existing roles and determine if that user group will need Access/View/Add/Edit/Delete permissions for each of the specified features.

1. Click on Admin
2. Click on Manage Roles.



3. Click on Role name.



4. The administrator can modify the permissions for any of the roles. In order to preserve the default roles and permissions, we recommend a new role be created or an existing role cloned which the administrator can then name and modify as necessary.

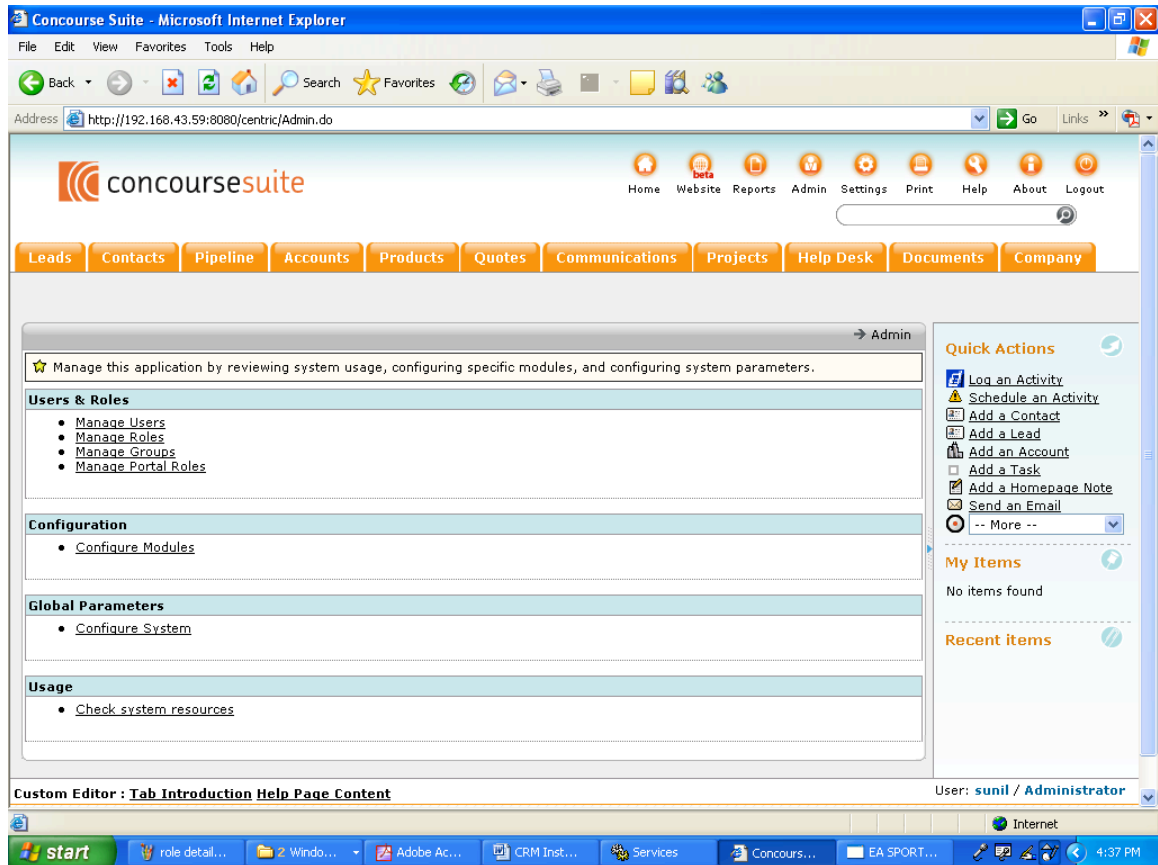
## Add Users

Each user must be a contact in the system, typically listed in the Company module. You can easily create a new employee when adding new users by choosing the [Create Contact] on the Add User page.

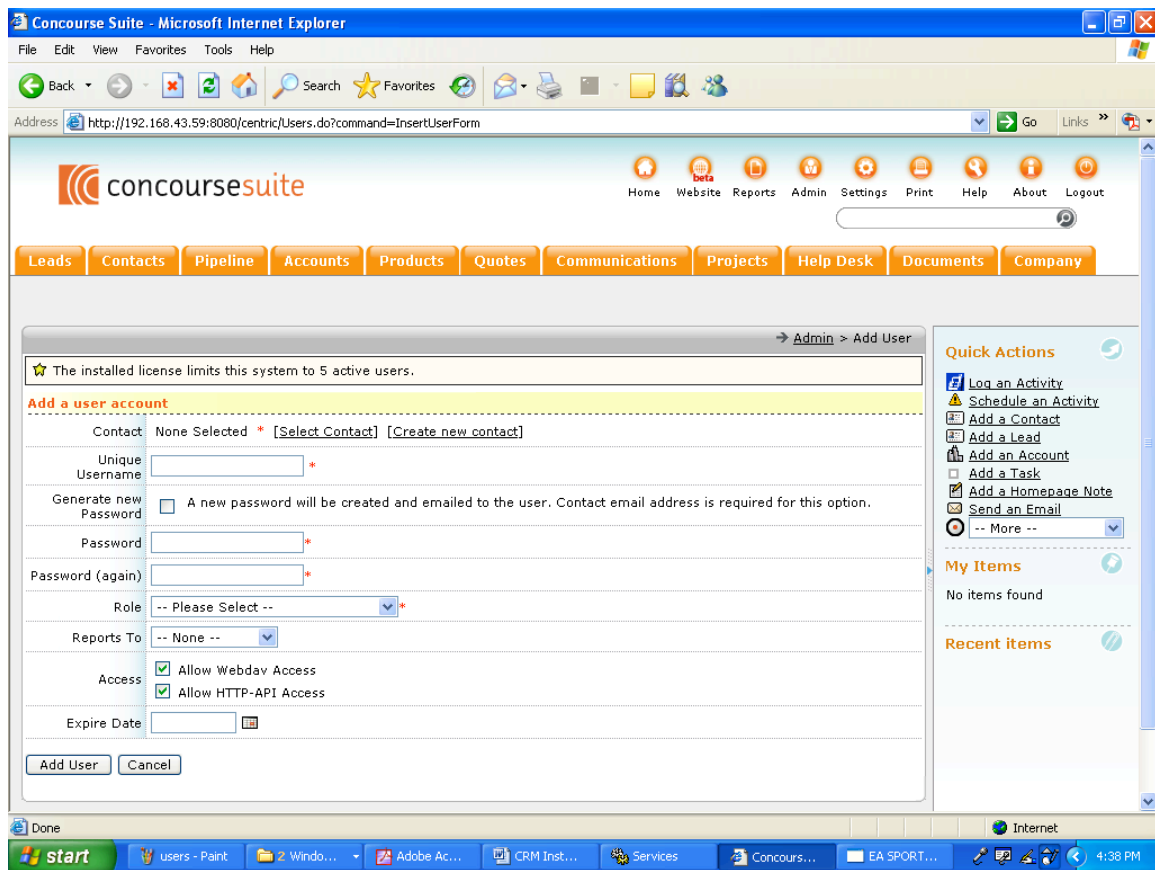
The current LDAP implementation only validates the user's password against LDAP; the user must still be entered into ConcourseSuite as a user. The change password feature will not work in ConcourseSuite for LDAP users.

### Adding a User:

1. Click the Admin button.



2. Click Manage Users.
3. Click Add new User



4. Enter the details and click the Add User button.

## Advanced Technical Topics

### Database Backup and Restore

#### PostgreSQL

- pg\_dump
- psql IBM DB2 Microsoft SQL Server Firebird SQL

### Setting up a Standby Web Server

While a single server can have plenty of hardware redundancy and software backups, it's possible that a complete hardware or software failure can occur. Be prepared by setting up a spare server that is ready to go in a moment's notice.

**The spare server must meet all of the hardware and software requirements.**

1. Install Java and Tomcat just the same as the primary server.
2. If the database server is being setup on the spare, then install and migrate the centric\_crm database.
3. Copy the ConcourseSuite .war file from the production server into the Tomcat's webapp directory on the backup server.
4. Copy the fileLibrary directory from the production server to the backup server.
5. In the fileLibrary, review and modify the build.properties file, as necessary, since some file paths and IPs are stored and referenced in this file.
6. Start Tomcat.
7. Navigate to the web application on the spare server and at the welcome page, choose to "Use ConcourseSuite from a backup"
8. At the next prompt, input the directory to the fileLibrary; ConcourseSuite will read the license and file and configure the application to use the previous preferences.
9. You can test logging in, but do not add any new data from this instance because the production instance will not receive updates to it's cache; the spare is now ready.

## Questions

For additional information, support, or training, visit <http://www.concursive.com> for details. You will also find product FAQs and announcements.

# Known Issues

While ConcourseSuite is written in pure Java, it may not be compatible with all the available application servers. The following issues are known:

1. Websphere Standard Edition currently requires the setup to “turn on” webapp directory writing.
2. JBoss should work if the .war is extracted first into a directory, and then deployed. This occurs because some files are written into this directory.
3. Weblogic has not been tested recently... it might work.
4. gcc-java does not work; if your Linux distribution comes with gcc-java then it needs to be replaced with either Sun Java or IBM Java.
5. Quick Action “Send an email” emails do not show the email in the sent email box when looking at email using the Home Page -> Mailbox link and setting the mailbox to view to sent (outbox). The “Mailbox” link on the home page is a feature that allows users of Centric CRM to exchange messages and can see such messages under Inbox/Outbox. The “Send an Email” link under quick actions allows a user to send an email message to Contacts outside Centric CRM as email messages and will be tracked under Contacts. The “Send an Email” and “Mailbox” are two independent features and were never designed to be treated as one feature or related features.
6. When uploading an image greater than 2 MB in size under the Documents tab “the requested page not found” error may appear. This is a configuration issue that can be corrected by increasing the browser memory. How to change the tomcat memory configuration:

Go to Tomcat5.5 -> bin -> click tomcat5w(Prorun service manager)

or

Start -> Programs -> Apache tomcat5.5 -> configure tomcat

It will open Apache tomcat properties window

Click java and provide values

Initial memory pool : 256 mb

maximaum memory pool : 512 mb

Click Apply -> OK.

Restart Tomcat.

7. If an Ingres database is not configured with sufficient memory a `com.ingres.gcf.util.SqlEx: QEF is out of memory` error may be encountered. This can be corrected by increasing the memory as follows:

Ingres configuration manager -> DBMS server -> default -> Derived -> 67  
qef\_dsh\_memory -> edit value (By default it was set at 81920000 bytes)  
Try setting it to 100000000 bytes  
after changing click close (in alert window click save).  
Restart the database.

8. Portal users may encounter the following behaviors that are based on the roles/permissions assigned:

If portal user is given access to the Projects module and no access to the Accounts or Account records then he will not be able to login. They will see the warning message”

“An Error Has Occurred.  
The system administrator has been notified.  
You do not have the permissions to perform this action.”

If the portal user is only given access to the Projects module and access to Account records (but not access to accounts) then the page they see shows the account record instead of the Project module.

9. A user must have the “View Performance Dashboard” permission to login and open My Home Page.

10. Uploading large images in the Product module can cause a `java.lang.OutOfMemoryError: Java heap space`. This can be fixed by adjusting the heap size. The java heap size can be increased using the following runtime parameters: `java -Xms<initial heap size> -Xmx<maximum heap size>` Defaults are:

`java -Xms32m -Xmx128m`

11. In order for the module Help pages to work, an Introduction screen must be created first. Once this is done, then create a Help page and it will be displayed. The Custom Editor is used to do this and permission to access the editor is granted by an administrator in the Admin -> Configure Roles section.

12. Systems upgraded to ConcourseSuite 5.0.5 from 4.1.x using MySQL may encounter an SQL error when modifying a custom folder and unchecking the form field for "multiple records" or "enabled" when these fields were previously checked and saved.
13. Systems using a new installation of ConcourseSuite 5.0.5 and a DB2 database will not be able to edit and save draft categories. Installations that have been upgraded from a prior release do not seem to exhibit this behavior.
14. If upgrading a system using the Derby database in Centric CRM versions 4.1.1 through 4.1.2, if an attempt to populate a custom field was made and an error was received at that time in the 4.1.x instance, the upgrade will fail. Deleting the account or contact associated with that record will not fix this.
15. Complex meetings (e.g., notifications sent by Fax, optional attendees, or recurring meetings) may not properly synchronize with Concourse Suite 5.0.6.
16. The column headings and alphabetical search bar on the Accounts Search Results page do not function properly.
17. In ConcourseSuite 5.0.6 the cancel button is missing from the Schedule an Activity window. You can either simply navigate away from the activity entry page or use the blue toggle menu option Cancel to cancel the activity once you have created it.
18. In ConcourseSuite 5.0.6 the website "Back to Category" link does not work after using the "Email this item to A Friend" button.
19. In ConcourseSuite 5.0.6 in some installations iCal will only sync the first time due to authentication issues.
20. In ConcourseSuite 5.0.6 under Admin > Manage Groups you can not add a user based on account type.
21. Entering large values for the Estimated Level of Effort using the Quick Action link will result in the value being converted to scientific format. If attempting to modify the entry you will have to re-enter the value in integer format in order to save any changes, otherwise an error message will appear.
22. In ConcourseSuite 5.0.6 under certain circumstances, the warning that appears identifying dependencies for deleting a product may display the wording for deleting a website instead. However the dependencies identified appear to be correct and the proper items are deleted.
23. In ConcourseSuite 5.0.6 when using the quick action link Schedule an Activity to create the associated contact will not automatically populate the



selected contact. You will have to search and select the contact once you have created it.

24. In ConcourseSuite 5.0.6 the Leads module only reflects "working" as a status if the lead has been converted to a Contact or an Account. Creating a Note, sending a Message or Scheduling an Activity for the lead will not change the displayed status to working.

25. When modifying a Knowledge base ticket, the Opera browser will not display or save modifications entered for the description field. Other browsers do not appear to have this issue.

26. In ConcourseSuite 5.0.6 clicking the "Skip this Lead" button when viewing a Lead Details page after a search is performed will take you to the Leads overview page.

27. Searching by stage in accounts returns all contacts if the "Include contacts" check box is selected, not just those meeting the search criteria.

28. Action Plan may not correctly reflect the days elapsed if a user "unchecks" a step and then moves forward on the plan.

29. Help desk tickets may generate an error when large amounts of data are entered into the Issue or Resolution text boxes.

30. The Licensing server still refers to Centric CRM instead of ConcourseSuite.

31. When attaching a file to a message it is necessary to save the message (the selected file will not appear to be attached), modify the message and then reselect the file attachment. The attachment will then be included on the message once it is resaved.

32. If a user is on the home page and tomcat is restarted then the links on the calendar will generate an error unless the page is refreshed.

33. vCard exports do not include the phone extension.

34. Concourse Suite is tested using the IMAP and POP3 protocols. IMAP is the preferred protocol for e-mail connectivity within ConcourseSuite. IMAP offers several advantages over POP, including: better functionality in manipulating the inbox, the ability to manage mail folders besides one's inbox, and superior online performance.

If you do use POP3, use the POP3 UIDL (Unique IDentification Listing) command. UIDL provides a mechanism to assign a string of characters as a permanent and unique ID for the message. When a POP3-compatible e-mail

client connects to the server, it can use the UIDL command to get the current mapping from these message IDs to the ordinal message numbers. The client can then use this mapping to determine which messages it has yet to download, which saves time when downloading. IMAP has a similar mechanism, a 32-bit unique identifier (UID) that must be assigned to messages in ascending (although not necessarily consecutive) order as they are received. Because IMAP UIDs are assigned in this manner, to retrieve new messages an IMAP client need only request the UIDs greater than the highest UID among all previously-retrieved messages, whereas a POP client must fetch the entire UIDL map. For large mailboxes, this difference can be significant.

Testing is done with IMAP and several popular POP3 email servers. ConcourseSuite has not been tested against all email clients and servers.

## UPGRADE COMPATABILITY MATRIX FOR 5.0.6

Database	Release 4.1.1	Release 4.1.2	Release 5.0	Release 5.0.1	Release 5.0.2	Release 5.0.3	Release 5.0.4	Release 5.0.5	Release 5.0.6
Postgres	✓	✓	✓	✓	✓	✓	✓	✓	✓
Derby	✓	✓*	Fresh install	Fresh install	✓*	✓*	✓*	✓	✓
DaffodilDB	✓	✓	Fresh install	Fresh install	Fresh install	Fresh install	Fresh install	not supported	not supported
DB2	✓	✓	Fresh install	Fresh install	✓	✓	✓	✓	
MSSQL	✓	✓	✓	✓	✓	✓	✓	✓	✓
MySQL	✓	✓	✓	✓	✓	✓	✓	✓	
Oracle	✓	✓	Fresh install	Fresh install	Fresh install	✓	✓	✓	
Ingres	not supported	not supported	Fresh install	Fresh install	Fresh install	✓	✓	Fresh install	
Interbase	not supported	not supported	not supported	not supported	Fresh install	✓	✓	not supported	not supported
Firebird	✓	✓	not supported	not supported	Fresh install	✓	✓	not supported	not supported

### NOTES

- If an attempt to populate a custom field inside a folder was made for release 4.1.1 or 4.1.2 and the Derby database was used the attempt would have failed. If this is the case then you most likely will not be able to upgrade to a later version. This appears to be an issue specific to the Derby database.
- If you are attempting to upgrade from 4.1 or 4.2 to 5.0.6 the upgrade will fail because it will try to rerun several scripts that were executed during the 4.1 and 4.2 upgrade process.